

# **Eighth Family Research Network (FRN) Forum**

***“Caregiving in Singapore: Insights,  
Highlights and Experiences”***

**Tuesday, 7 August 2012  
Auditorium, Level 1, Civil Service College**

# 8<sup>th</sup> Family Research Network Forum

## Support for Caregivers: Recommendations in the Enabling Masterplan 2012 – 2016

Phyllis Choo  
Director, Planning

7 August 2012



# Introduction

- 2006: MCYS and NCSS embarked on the inaugural Enabling Masterplan
  - Charts the development of the disability sector for 5 years (2007 – 2011)
- 2011: MCYS announced the plan to embark on a new 5-year Enabling Masterplan
  - Builds on the foundation laid down by earlier initiatives for Singapore to strive towards an inclusive society

# Methodology



# Vision

**An inclusive society where persons with disabilities are empowered and recognised, and given full opportunity to become integral and contributing members of society.**



Children with special needs to receive early intervention and education services

Persons with special needs to access employment opportunities

Families to be empowered to support family members with special needs

Public, people and private sectors to work with persons with disabilities and their families to achieve vision

# Guiding Principles

## Principle 1

Inclusive approach towards persons with disabilities

## Principle 2

Recognise the autonomy and independence of persons with disabilities



Guiding Principles

## Principle 4

Community as a source of support; empower families to care

## Principle 3

Integrated approach with support of People, Public and Private partners

# Guiding Principles

## Principle 4: Involve the community as a source of support and empower families to care

- What it means
  - Community acceptance, volunteerism and **family support** as pillars for inclusiveness
- What it takes
  - Public education and community involvement to encourage acceptance of persons with disabilities, volunteerism
  - **Comprehensive caregiver support framework to empower and support families to care for persons with disabilities**
    - Financial, social and emotional aspects of caregiving

# Key Areas

An inclusive society where persons with disabilities are enabled to participate fully

Early  
Intervention

Education

Employment

Care for  
Adults with  
Disabilities

Manpower and Technology  
Community Integration and Accessibility  
Public Education and Volunteer Management  
Sports and Healthy Lifestyle  
Caregiver Support and Transition Management



# **CAREGIVER SUPPORT**

## **- Concerns of Caregivers**

# Feedback from Caregivers

- Respite care
  - High risk for fatigue/ burnout
  - Need for more respite care options/ facilities by trained personnel
- Support for caregivers in employment
  - Balance work and caregiving duties
  - Remain in workforce to sustain family income
    - Need to pay for services, medical treatment, therapy etc for care recipient

# Feedback from Caregivers

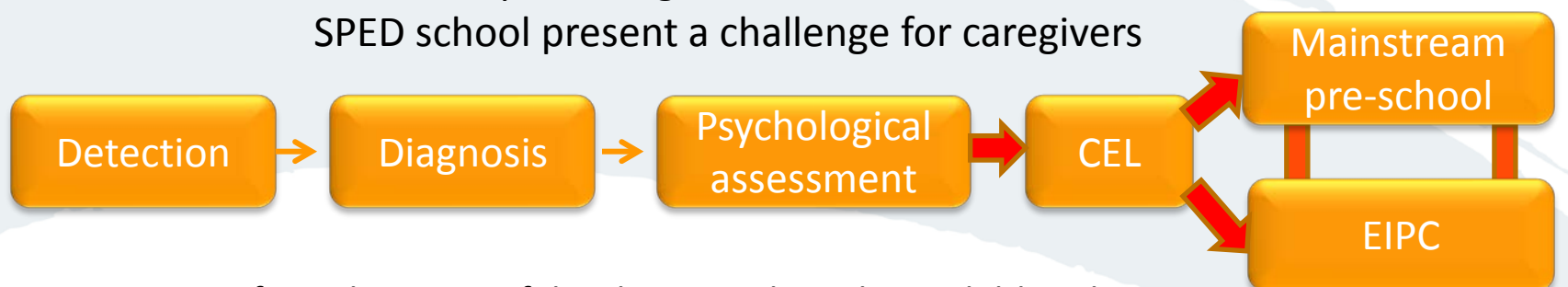
- Caregiver training
  - Expand scope of caregiver training
    - Focused mainly on caring for children with special needs
- Psycho-emotional support
  - More help in stress management e.g. counselling services
- Ageing population and longer life expectancy of persons with disabilities
  - Ageing caregivers looking after older persons with disabilities
  - Persons with disabilities outliving their caregivers
  - Fewer siblings to look after persons with disabilities

# Feedback from Caregivers

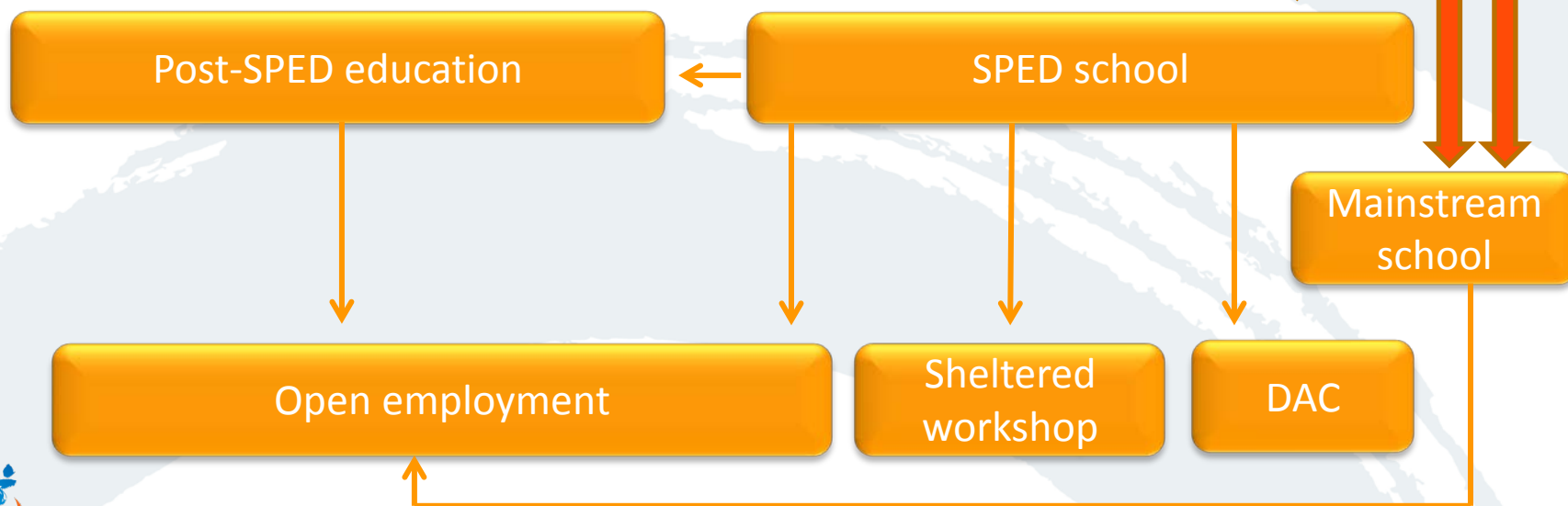
- Transition management
  - More help in navigating the disability landscape, esp across transition points
    - Points of change in services, and in the personnel and organisations that coordinate and provide the services

# Transition Points

Transition points e.g. fr EIPIC to mainstream or SPED school present a challenge for caregivers



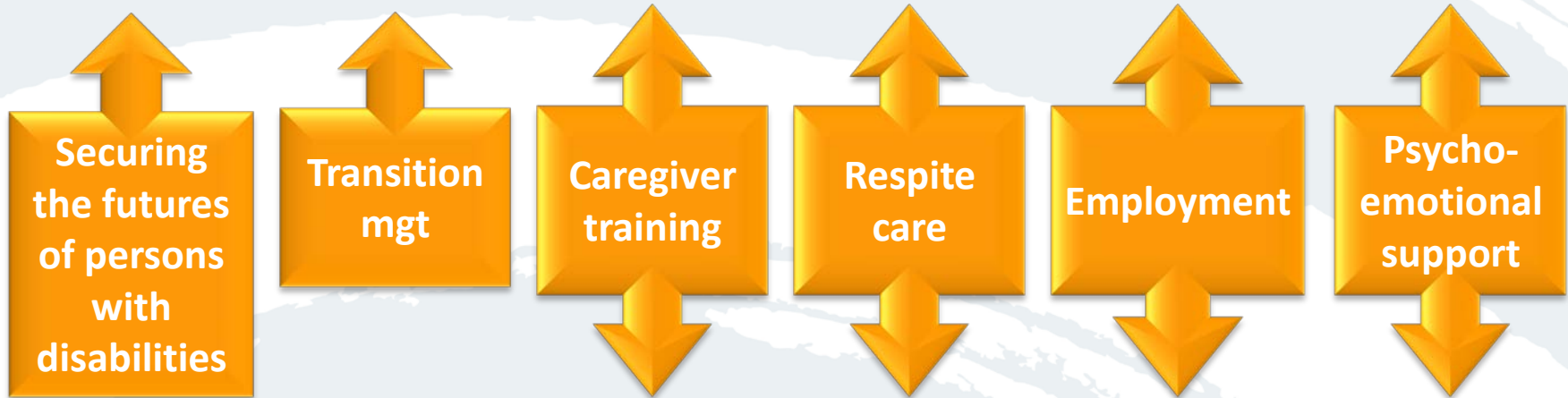
Current transition from detection of developmental needs to adulthood



# CAREGIVER SUPPORT - Recommendations

# Strategic Thrusts

Thrust 1- Enhance access to progs and services



Thrust 2 –  
Build  
caregivers’  
capability

Thrust 3 - Enhance care options for  
caregiver relief and support

# Thrust 1 - Enhance Access to Programmes and Services

(1) CEL as the coordinating agency for caregiver support services



**Signposting system to help caregivers access support services proactively**

- Develop care plan and transition plan templates
- Help families develop and review care plans
- Centralise referrals under CEL



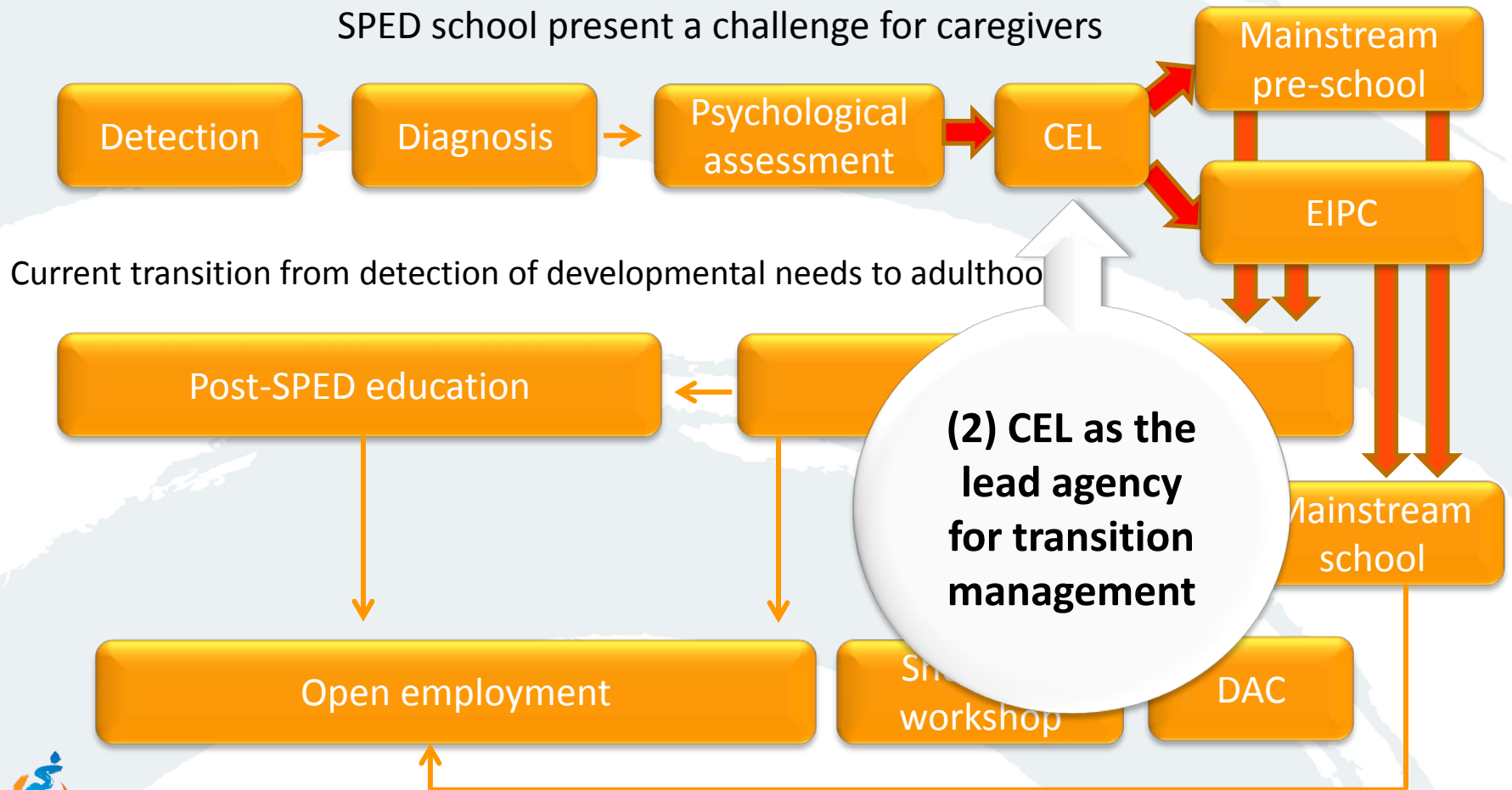
**Enhancing financial and legal security of persons with disabilities**

- Providing more resources for caregiver education on legal and financial security measures for persons with disabilities



# Thrust 1 - Enhance Access to Programmes and Services

Transition points e.g. fr EIPIC to mainstream or SPED school present a challenge for caregivers



Current transition from detection of developmental needs to adulthood

Post-SPED education

Open employment

**(2) CEL as the lead agency for transition management**

Mainstream pre-school

EIPIC

Mainstream school

Sh workshop

DAC

# Thrust 1 - Enhance Access to Programmes and Services

## (2) CEL as the lead agency for transition management

Ensure persons with disabilities and caregivers have access to info and services at diagnosis and across transition points



Develop common system across agencies to facilitate appropriate placements and review of progress of persons with disabilities



Set up a case coordination system across transition points



Develop shared national database to enhance transition planning and flow of information

# Thrust 2 – Build Caregivers' Capability

## Caregiver Training

Structured training tailored to caregivers' needs and competency



Develop core  
competence  
training roadmap  
for caregivers



Early/ pre-  
employment  
training for FDWs



Evaluate  
quantum and  
scope of Caregiver  
Training Grant

Provide caregivers with resources, information, early intervention skills/  
knowledge to become active partners in early intervention

# Thrust 3 – Enhance Care Options for Caregiver Relief and Support

## Respite care/ employability

Relieve caregiving responsibilities; enhance caregiver's ability to care



Increase respite care options – short-term stay-in respite care

Develop home-based care for persons with disabilities

Centre for Enabled Living



Increase dedicated child/student care services for children with special needs

FDWG to make care arrangements more affordable



Review Integrated Child Care Programme (ICCP)

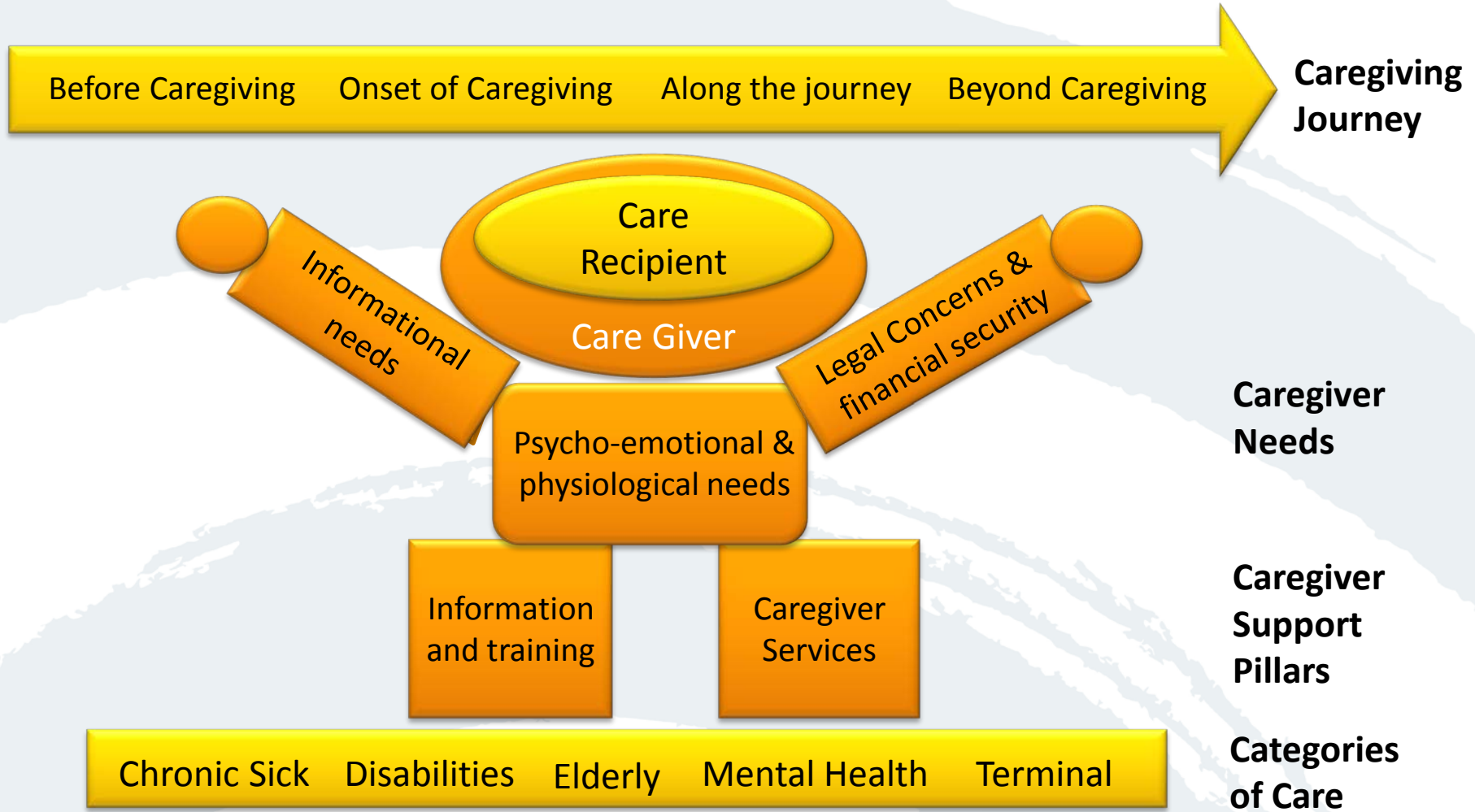
DACs to provide for various disabilities; enable persons with disabilities to use eldercare facilities and services

**LIVENABLED**



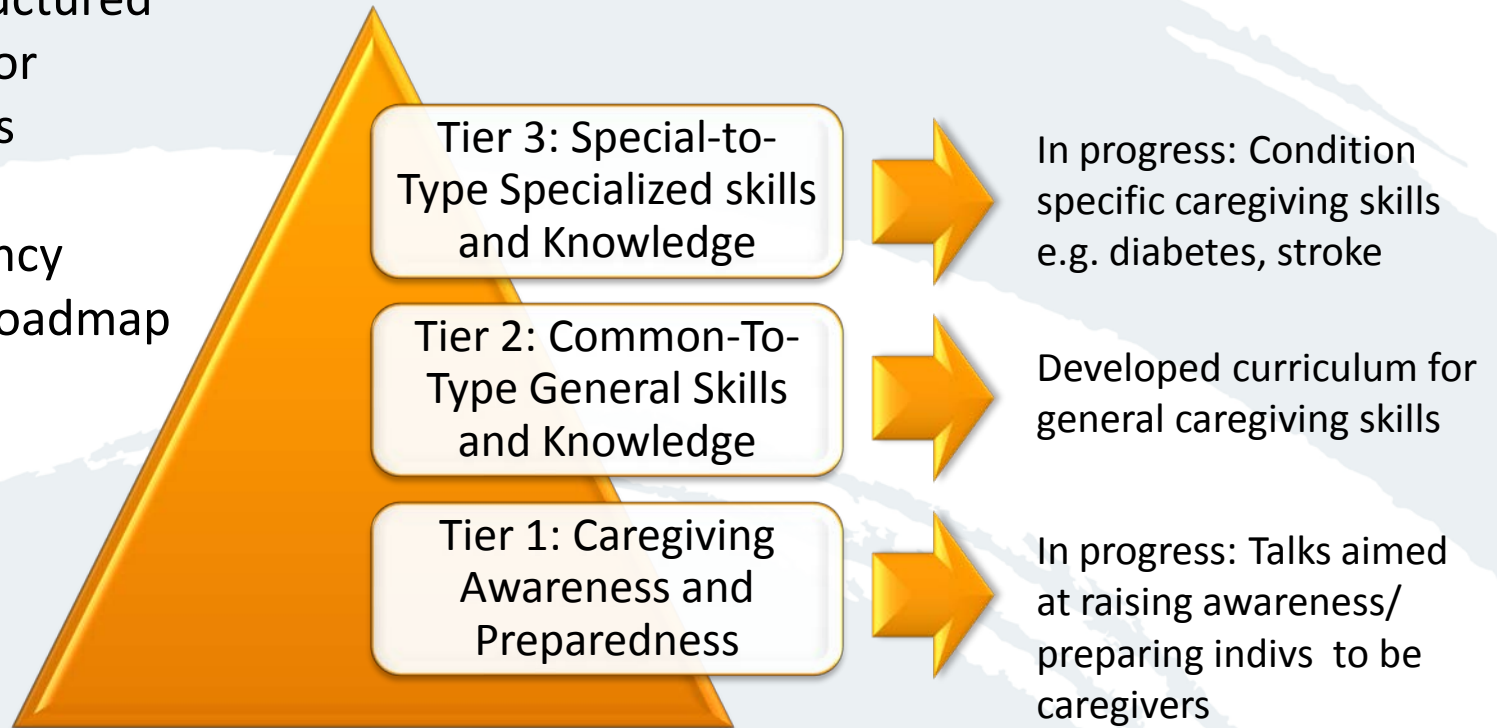
# CAREGIVER SUPPORT - Moving Forward

# CEL-AIC Joint Caregiver Support Framework



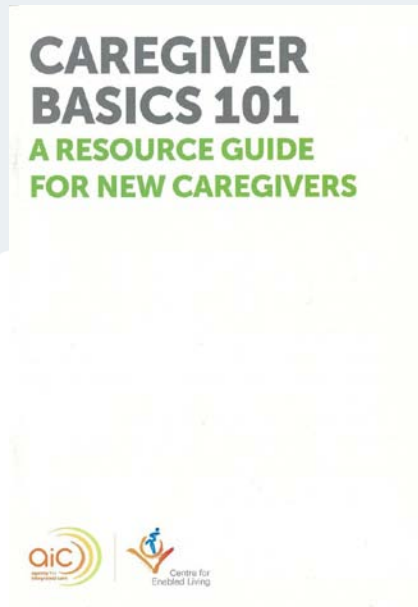
# Information and Training

More structured training for caregivers  
- Core competency training roadmap





# Information and Training



**CONTENTS**

/// SECTION 1  
Am I a caregiver? 02

/// SECTION 2  
My guide to caregiving  
What am I expected to do as a caregiver? 06  
How do I determine the amount of care required? 08  
What are my own needs and capabilities? 08  
Considering my care recipient's preferences 09

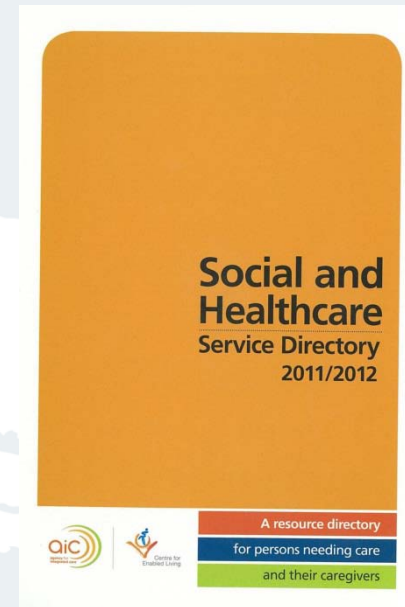
/// SECTION 3  
Training for caregivers 10

/// SECTION 4  
Financial and legal matters 13

/// SECTION 5  
Caregiver's well-being  
Managing your stress 20  
Coping with depression arising from taking care of your care recipient 22  
Beware of caregiver burnout 22  
Respite care 23  
Caregiver support 23

/// SECTION 6  
Home modifications  
Making your home safe 25  
Examples of home modifications 26

/// SECTION 7  
Resources  
Caregiver training provided by restructured hospitals 29  
Caregiver training providers 29  
Respite care services 32  
Caregiver support services 35

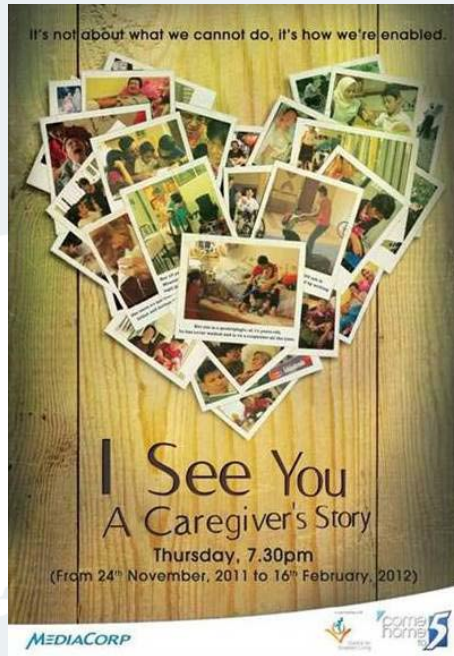


Dedicated to info and resources on caregiving, incl caregiver self-care

Directory on health and social care services  
- English and Mandarin



# Information and Training

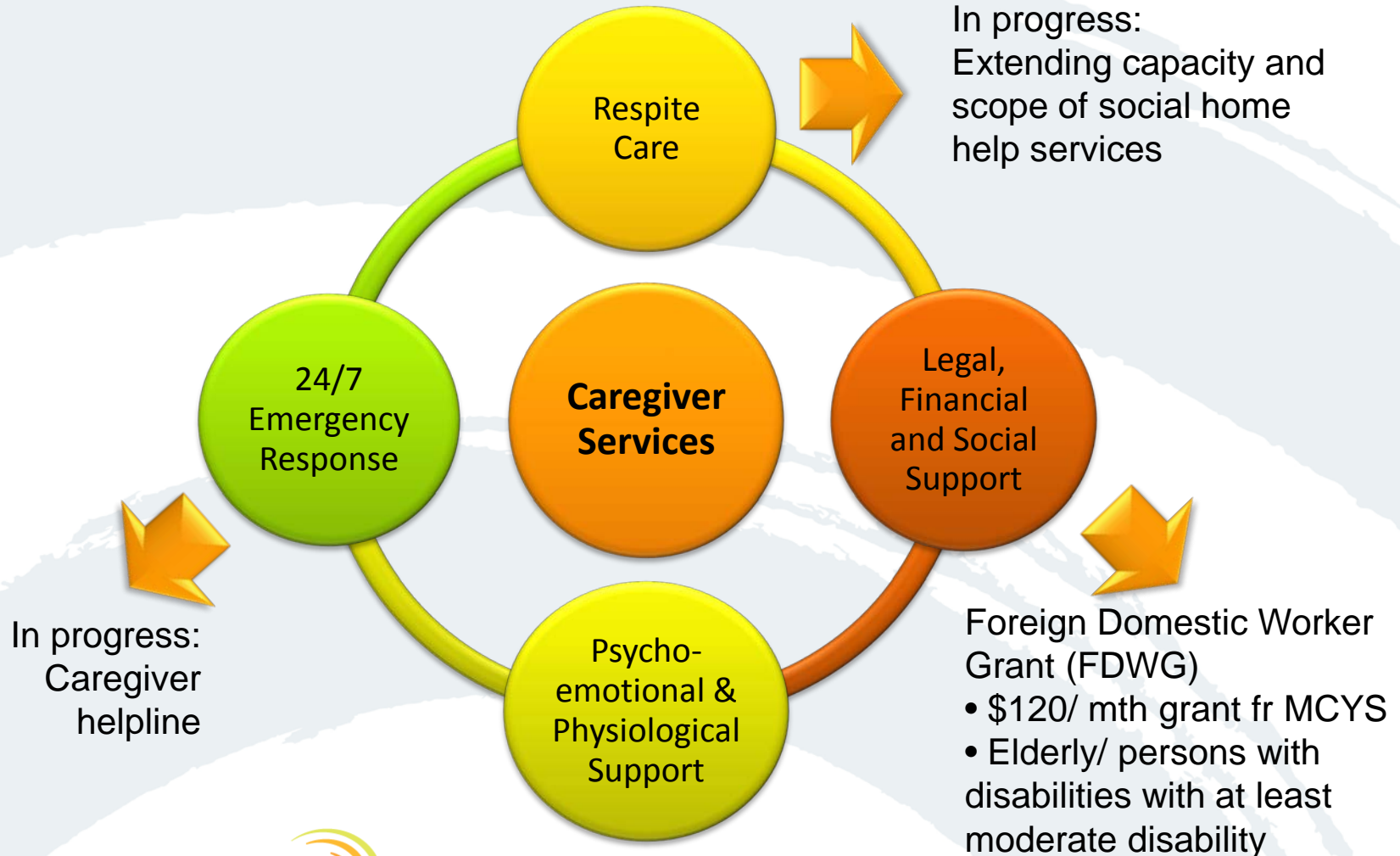


13-parter docudrama featuring real-life experiences of caregivers and advice



CEL partnering with AIC to re-develop Singapore Silver Pages, with greater focus on caregivers and caregiving

# Caregiver Services



**THANK YOU**



Centre for  
Enabled Living

**6505 6464**

[Contact@cel.sg](mailto:Contact@cel.sg)

[www.cel.org.sg](http://www.cel.org.sg)