

Forum on Parents and Schooling

Thursday, 31 August 2017
Ballroom 3, Level 3
Orchard Hotel Singapore

PANEL I
Every School a Good School – Myth or Reality?

PRESENTATION BY
Ms Aidaroyani Adam

Director
Education and Research Policy
Yayasan MENDAKI
and
Member
School Advisory Committee
Henry Park Primary School



**EXCELLENCE & EQUITY
IN EDUCATION**
AIDAROYANI ADAM



LIVING ON A TIGHT BUDGET

Insights into the Lives of Disadvantaged Malay Families
MENDAKI (2015)

TOP PRIORITIES IN LIFE



Round 1 Q9: What are the three most important priorities in your life?



Involvement in children's development and education

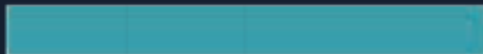
Type of Involvement



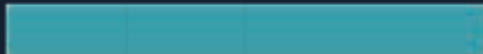
In touch with teachers



Does not get involved



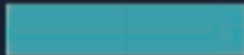
Grand parent involvement



Provide encouragement



Direct involvement regular support in homework



Send children to student care center



Types of Challenges Faced

Difficulties due to high standards of education



Difficulties due to mathematics



Difficulties to being educated in a different educational system



Child quit school early



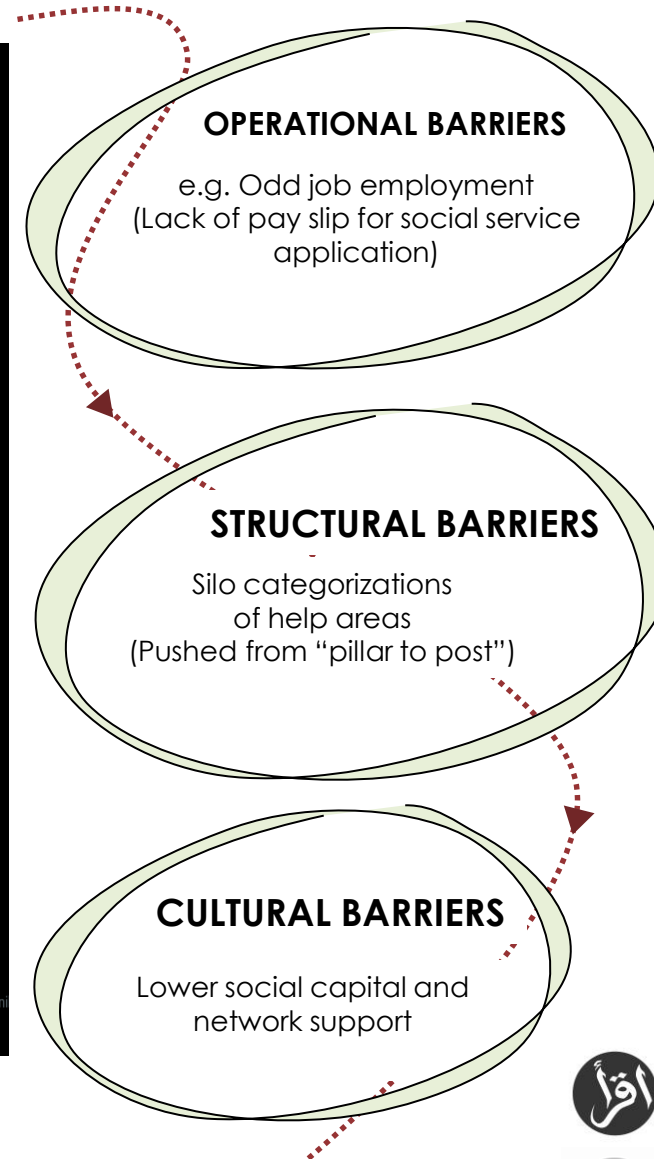
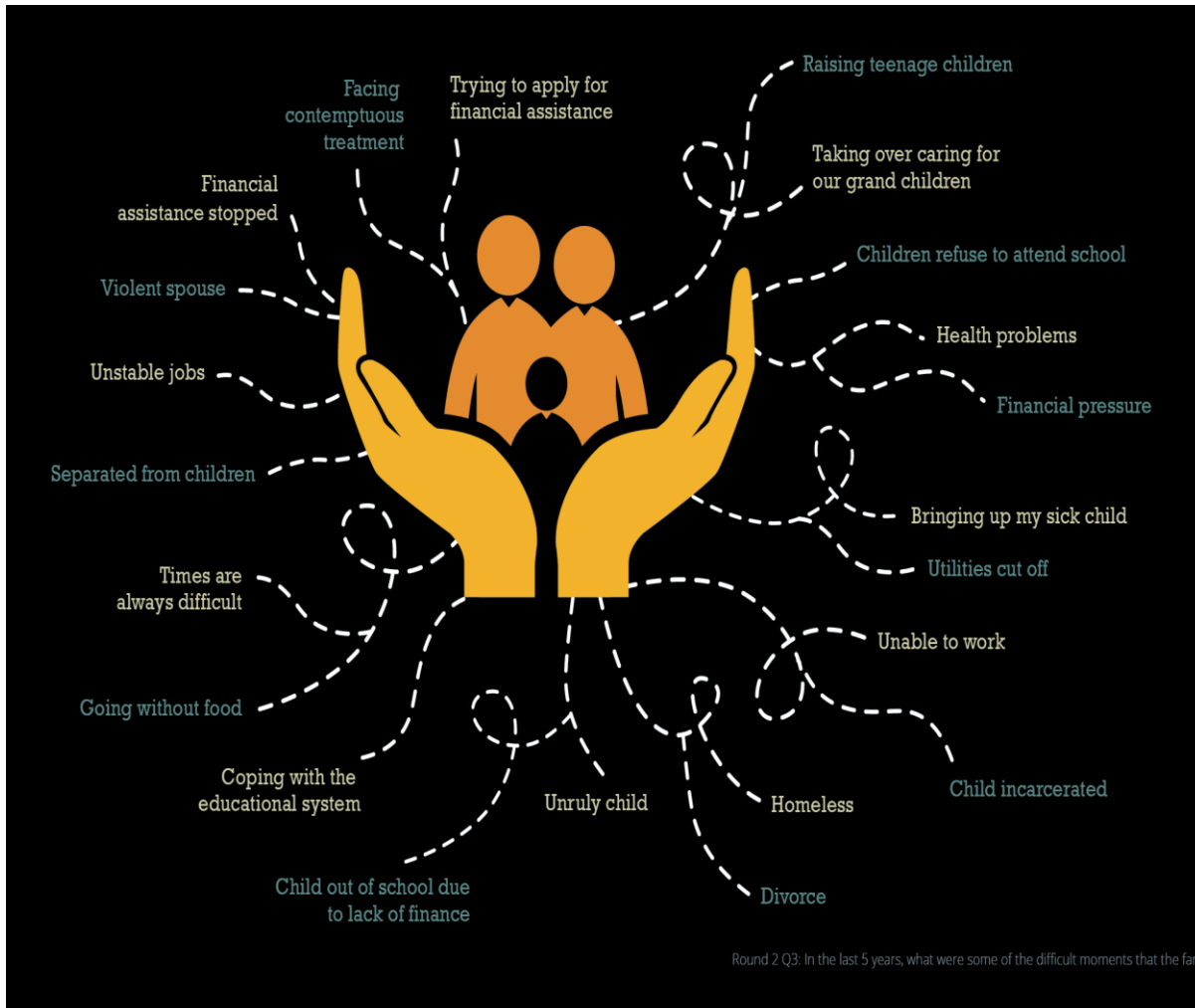
Difficulties due to child meandering



Difficulties due to health problems



CHALLENGING TIMES



“I think the amount of money spent on food is the highest. If we do not have enough money, we will just eat rice and egg. We live on a budget.”

“We seldom eat dinner as the family tries to reduce consumption.”

COPING

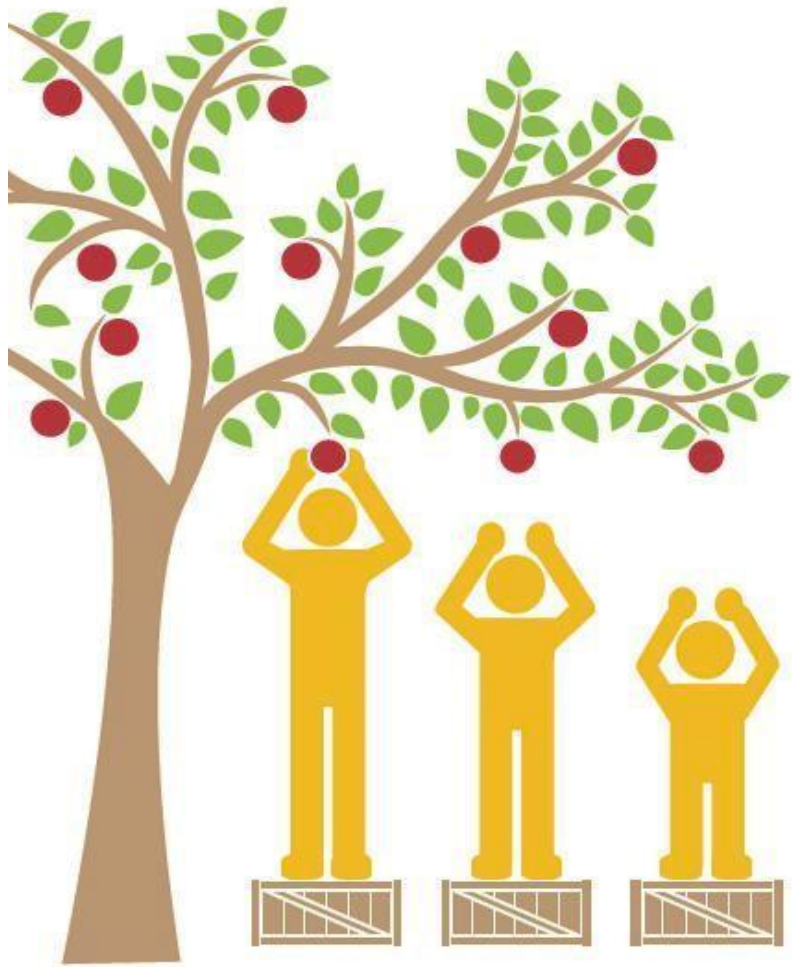
strategies

COPING

strategies

“I wish my teacher knew how much I miss my Dad because he got deported when I was 3 years old and I haven’t seen him in 6 years.”

“I wish my teacher knew I don’t have pencils at home.”



EQUALITY

VS



EQUITY

An aerial photograph of a lush tropical forest. The majority of the trees are vibrant green, indicating they are healthy. In the center of the image, a large, prominent tree stands out as it is completely white and devoid of leaves, suggesting it is dead. The forest extends to the edges of the frame, with various tree species and canopy heights visible.

The **HENRY PARK** story



Additional financial support for disadvantaged by the SAC

Engaging and preparing for life and not just PSLE

Tiered support that looks at academic and SEL, individualised attention

Well-being, LJs, enrichment programmes, additional resources

Support to parents in collaboration with community partners

President's Award for Teachers 2017

Dr Ow-Yeong Wai Meng
HOD, Student Well-Being
Henry Park Primary School



An aerial photograph of a lush tropical forest. The majority of the trees are vibrant green, indicating they are healthy. A single, large tree in the center of the frame is completely white and devoid of leaves, standing out starkly against the surrounding greenery. The forest extends to the edges of the frame, showing a dense canopy of various tree species.

The **SPECTRA** story

The Spectra Story



Aspiration

Desire to complete his N levels and attend ITE

“Student of the Month”

for showing resilience in attending school regularly



Networks



Motivation



Opportunities



Only family member attending school

“ “ The form teachers, Year Head and KPs **never gave up** on him ” ”

ECOSYSTEM



MENDAKI VALUE PROPOSITION

MENDAKI CARE PEDAGOGY

Achieving Excellence,
Harnessing Socio-Emotional
Assets

POSITIVE ROLE MODELLING, ENRICHING ENGAGEMENTS

Enhancing Protective Factors of
Parent & Child

MENDAKI TUITION SCHEME

AFFORDABLE & QUALITY
TUITION

Ethics of Care

Research and Data in Evidence-
based Solutions

Learning Analytics

Enhancing Tutor Capacity &
Community of Learners

Digital Classroom

Cultivation of Learning Families &
Parent Education Core Curriculum
Framework

Empowerment for Girls

Working with Women Professionals

Youth-in-Action (Mentoring)

Family Excellence Circles

Enrichment

(Success PSLE Seminar, Learning
Festival)

MENDAKI Club (Leadership
Incubator)





MENDAKI Care Pedagogy

“The main goal of education should be to produce competent, caring, loving and lovable people”

~ Noddings (1992)

Every School A Good School

+ Every school a good school for every student especially the disadvantaged students

+ Every school a good school that meets every student where he or she is, especially the disadvantaged students and gives them tools to be successful at each stage of their education

+ Every school a good school that delivers on the promise of excellence and equity



*Thank You
Happy Teachers Day!*



Forum on Parents and Schooling

Thursday, 31 August 2017
Ballroom 3, Level 3
Orchard Hotel Singapore