

Inclusive Neighbourhood Groups



n+1
solve

Kenneth Heng & Lewin Low

Consultants & Project Co-leads

ABOUT US



Solve $n+1$

A Community-Based Management Consultancy that facilitates the building and implementation of innovative solutions, as well as strategic multi-sector collaborations.

We recognize and understand the unknowns (n) in each challenge and issue, and create exponential impact (+1) one step at a time.

We are also recognised as a Business for Good and a Social Enterprise Member of *raiSE*.

Projects at Solve n+1

TUESDAY, AUGUST 4, 2020 THE STRAITS TIMES

Opening up their homes to strangers in dire straits

20 families in volunteer network offer those facing crisis rent-free refuge for up to a year

THE STRAITS TIMES
Suzanne Tam
Correspondent

The Singaporean home opened its doors to a man and his wife and their two children in a spare room in a private rental flat. The family is in a dire strait, and the man is a migrant worker who has lost his job. The woman is a migrant worker who has lost her job. The family is in a dire strait, and the man is a migrant worker who has lost his job. The woman is a migrant worker who has lost her job.

They are not alone. In a network of 20 families, volunteers offer rent-free refuge for up to a year to those in dire straits. The network is a volunteer network of 20 families who offer rent-free refuge for up to a year to those in dire straits. The network is a volunteer network of 20 families who offer rent-free refuge for up to a year to those in dire straits.

It is a network of 20 families who offer rent-free refuge for up to a year to those in dire straits. The network is a volunteer network of 20 families who offer rent-free refuge for up to a year to those in dire straits. The network is a volunteer network of 20 families who offer rent-free refuge for up to a year to those in dire straits.

The network is a volunteer network of 20 families who offer rent-free refuge for up to a year to those in dire straits. The network is a volunteer network of 20 families who offer rent-free refuge for up to a year to those in dire straits. The network is a volunteer network of 20 families who offer rent-free refuge for up to a year to those in dire straits.

The network is a volunteer network of 20 families who offer rent-free refuge for up to a year to those in dire straits. The network is a volunteer network of 20 families who offer rent-free refuge for up to a year to those in dire straits. The network is a volunteer network of 20 families who offer rent-free refuge for up to a year to those in dire straits.

The network is a volunteer network of 20 families who offer rent-free refuge for up to a year to those in dire straits. The network is a volunteer network of 20 families who offer rent-free refuge for up to a year to those in dire straits. The network is a volunteer network of 20 families who offer rent-free refuge for up to a year to those in dire straits.

The network is a volunteer network of 20 families who offer rent-free refuge for up to a year to those in dire straits. The network is a volunteer network of 20 families who offer rent-free refuge for up to a year to those in dire straits. The network is a volunteer network of 20 families who offer rent-free refuge for up to a year to those in dire straits.

The network is a volunteer network of 20 families who offer rent-free refuge for up to a year to those in dire straits. The network is a volunteer network of 20 families who offer rent-free refuge for up to a year to those in dire straits. The network is a volunteer network of 20 families who offer rent-free refuge for up to a year to those in dire straits.

The network is a volunteer network of 20 families who offer rent-free refuge for up to a year to those in dire straits. The network is a volunteer network of 20 families who offer rent-free refuge for up to a year to those in dire straits. The network is a volunteer network of 20 families who offer rent-free refuge for up to a year to those in dire straits.

The network is a volunteer network of 20 families who offer rent-free refuge for up to a year to those in dire straits. The network is a volunteer network of 20 families who offer rent-free refuge for up to a year to those in dire straits. The network is a volunteer network of 20 families who offer rent-free refuge for up to a year to those in dire straits.

The network is a volunteer network of 20 families who offer rent-free refuge for up to a year to those in dire straits. The network is a volunteer network of 20 families who offer rent-free refuge for up to a year to those in dire straits. The network is a volunteer network of 20 families who offer rent-free refuge for up to a year to those in dire straits.

The network is a volunteer network of 20 families who offer rent-free refuge for up to a year to those in dire straits. The network is a volunteer network of 20 families who offer rent-free refuge for up to a year to those in dire straits. The network is a volunteer network of 20 families who offer rent-free refuge for up to a year to those in dire straits.

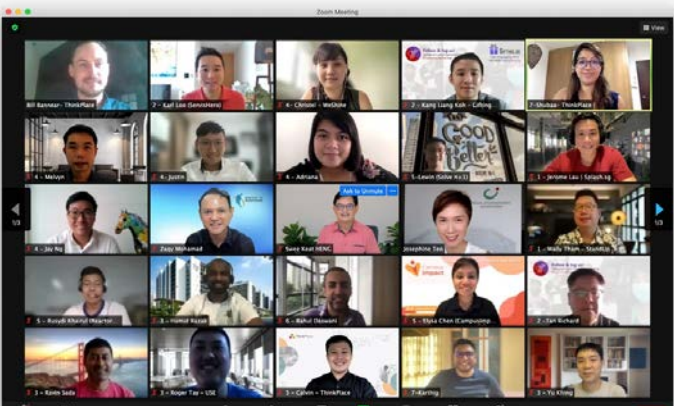
OPENING UP THEIR HOMES

Most families can't replace professional services, which are needed, but they can complement the remedial process by offering friendship, acceptance, love and care. These relationships provide stability between transitions so that the person in crisis can feel enough warmth and security that will enable them to continuously take steps forward for themselves.



Ms. Suzanne Tam and Ms. Mabel Lee are among the 20 families who offer rent-free refuge for up to a year to those in dire straits.

Open Home Network



Co-creating sustainable rest areas for Lower-wage workers



Feed 52

THE STRAITS TIMES

New book features anecdotes of social sector workers' experiences in Singapore



Titled Beneath the Rug, the publication was launched at the Temasek Shophouse by social enterprise Solve n+1. PHOTO: SOLVE N+1



Malavika Menon

PUBLISHED 18 NOV 2021, 10:16 PM SGT

SINGAPORE - As a special needs educator, one of Ms Sunaina Suri's most memorable moments was when a student interrupted her class and asked to go to the toilet.

What seemed like a simple request for permission was a huge milestone for the student, who had struggled with basic verbal communication until then.

"Saying something as simple as 'go toilet' may not seem a big deal to others, but to me, it showed he had progressed enough to communicate his fundamental needs to us. That was a fulfilling moment," said Ms Sunaina.

Beneath the Rug

Inclusion can be tricky

- Tokenistic Help
(But still better than no help?)
- Public Showcasing
(Advocating or Self-Serving?)
- Assimilation/ Integration/ Desegregation
(A needed push or reckless if society is not ready?)



Inclusion is ideally 'unremarkable'

- All can participate and contribute if they are willing and able.
- PWDs prefer that inclusion be *unremarkable* and achieved naturally or organically.



e.g., Reserved seating in MRT is 'noticeable' inclusion...
...but ok to build signposts and stepping-stones

Why address inclusion?



Last frontier & relatively underdeveloped:
Social inclusion + community participation

Recent developments:
Increased support and focus on caregivers

Key disability services across course of life:
Early intervention, Education, Employment.

Inclusive Neighbourhood Groups (ING)

A social design project that aims to use neighbourhood tours as a neutral platform to facilitate community ties between residents for meaningful mutual support.

Part of the ING research aims to identify the conditions required to facilitate the premise of inclusivity. With the research, we hope to provide a guidebook on how residents can self-organise and connect with a diverse range of residents

In partnership with:



Supported by:



Recipient of:

**GOOD DESIGN
RESEARCH**

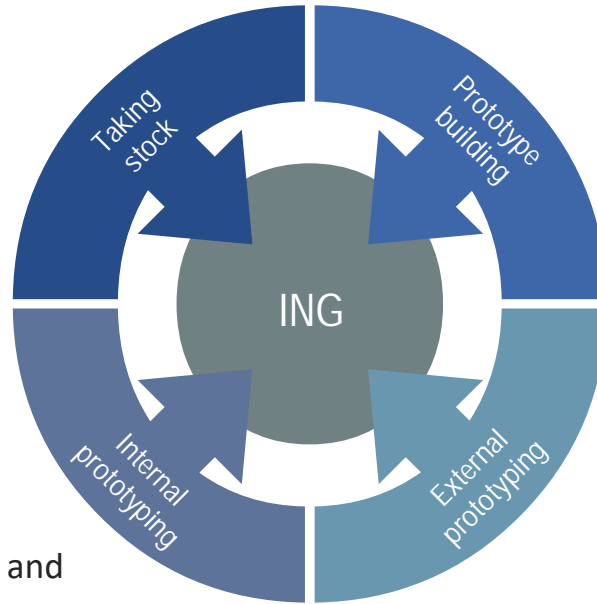
Inclusive Neighbourhood Groups

- 1** **Organic integrative activities**
Programme does not call out the disability status yet express inclusion through activities; it does not create unwanted attention.
- 2** **PWD focused, but design to scale**
Pilot: PWD focused, but programme can be expanded to other less included groups like isolated seniors etc.
- 3** **Small group as unit of transformation**
Citizen-led, 5-7 per group. ING activities can be customised for each locality and has a unique identity (Bedok-ING, AMK-ING, etc.).

Prototyping approach

Starting point:

- Taking stock of issue
- A few strong ideas to test



- Develop storyboards
- Role play scenarios, etc.

- Develop with practitioners
- Include partner organisations and professionals

- Develop with community
- Include actual users, PWDs, and caregivers

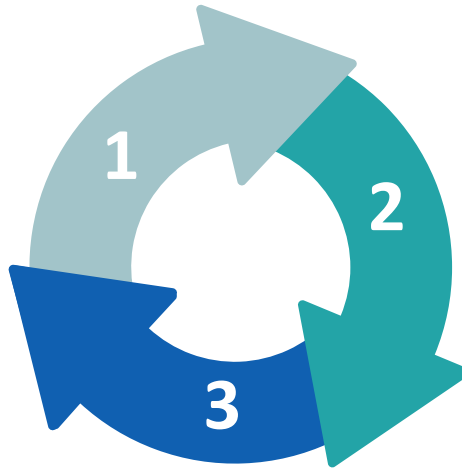
Ideal outcomes of ING

Strengthen social cohesiveness

ING activities can build neighbourliness and active citizenry by mobilizing the strengths and interests of the local community.

Build connectedness

Local organisations, merchants and groups get to know of and make accommodations for people with disabilities (and their caregivers).



Foster neighbourhood identity

Community get to know one another; PWDs and caregivers contribute back to their community.

ING helps us better understand whether relatively organic and unobtrusive inclusion activities can better generate acceptance and integration of people with disabilities.