

The Promise and Pitfalls of Program Evaluation



Lori A. Wingate, Ph.D.

The Evaluation Center - Western Michigan University



The Evaluation Center

Advancing the theory, practice, and use of evaluation since 1965.



Promise of Evaluation

- Programs (and organizations, sponsors) can find out what's working and what isn't so they can improve
- Nonprofits and government agencies allocate resources to effective programs
- Evidence-based decision-making leads to improved societal outcomes

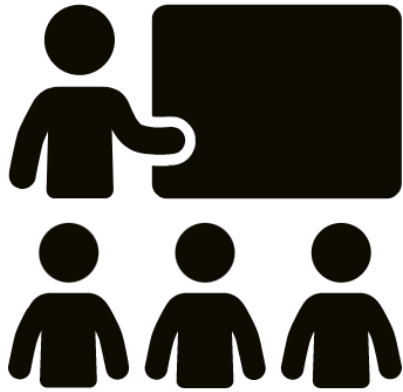


Evaluation

The systematic determination of something's merit, worth, or significance.



Logical Steps of Evaluation



“How was the presentation?”

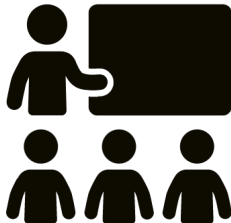


Logical Steps of Evaluation

1

Define
criteria

Determine what makes something of this type good, valuable, effective, etc.



Relevance of content

Quality of slides



Logical Steps of Evaluation

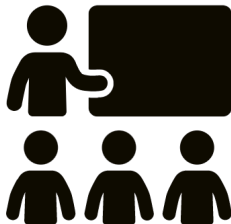
1

Define
criteria

2

Define
standards

Decide how well it needs to perform on these criteria to be acceptable, good, exceptional, valuable, etc.



Relevance of content: Participants must be able to use the information in their contexts

Quality of slides: Visuals must reinforce content



Logical Steps of Evaluation

1

Define
criteria

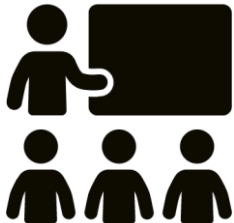
2

Define
standards

3

Measure
performance

Gather data on
performance.



Observe, ask others, compare to other presentations



Logical Steps of Evaluation

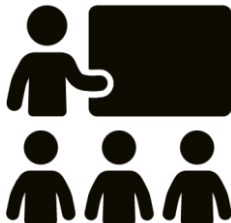
1 Define criteria

2 Define standards

3 Measure performance

4 Draw conclusion

Synthesize information about criteria, standards, and performance to reach conclusions about merit, worth, significance.



“How was the presentation?”

- “It was _____.”



Logical Steps of Evaluation

1

Define
criteria

2

Define
standards

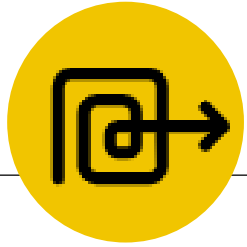
3

Measure
performance

4

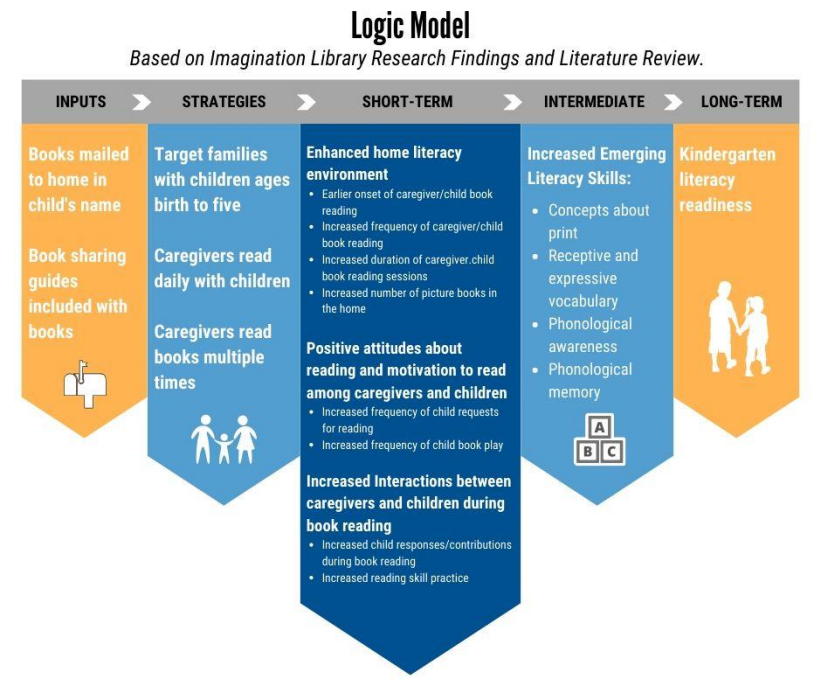
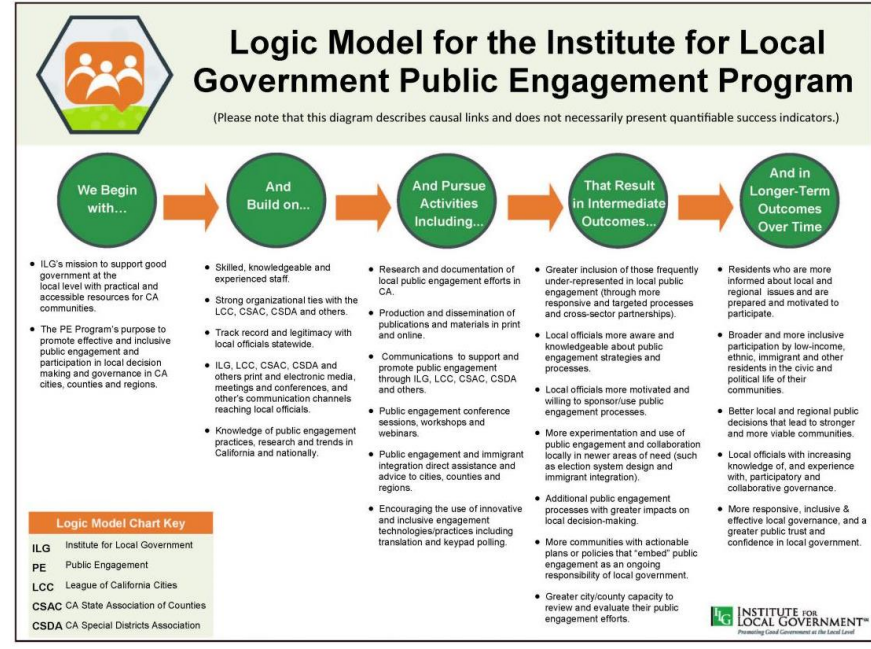
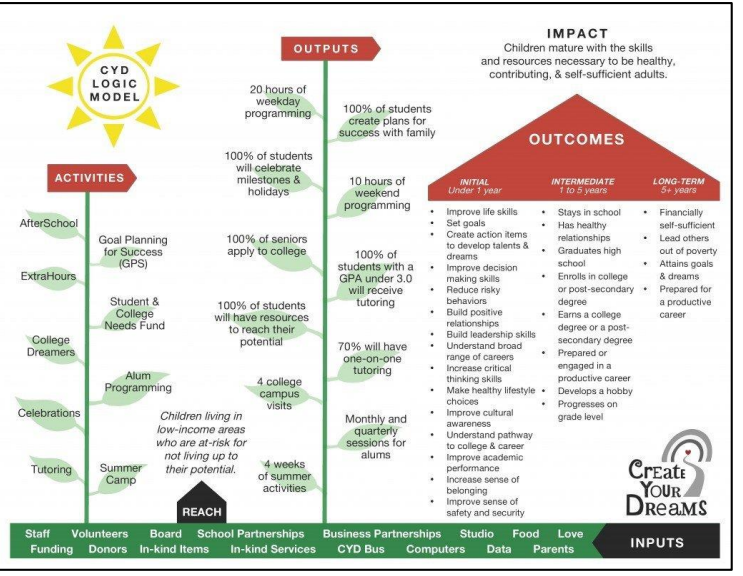
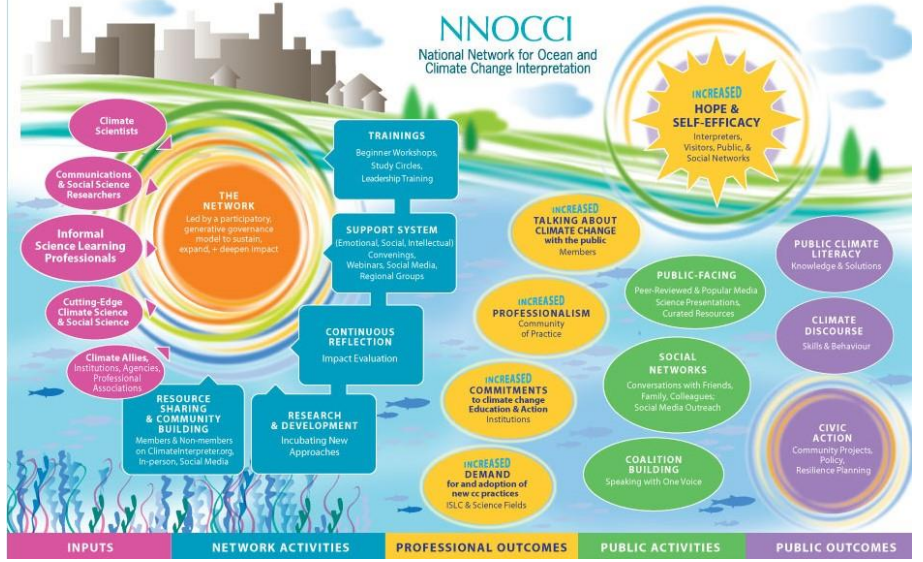
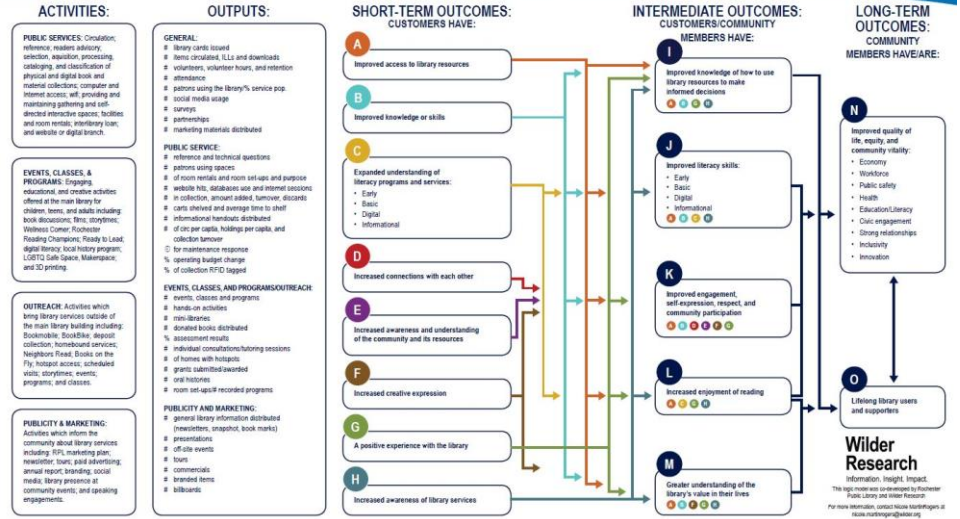
Draw
conclusion

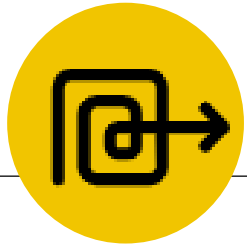




Program Logic Models

Illustrations of how programs translate resources into outcomes





Program Logic Models

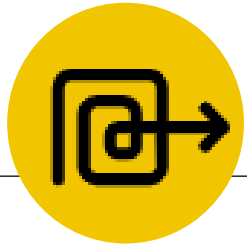
INPUTS

ACTIVITIES

SHORT-TERM
OUTCOMES

MID-TERM
OUTCOMES

LONG-TERM
OUTCOMES

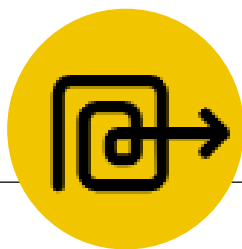


Program Logic Models



resources and assets that are
be utilized by a program

Evaluation Questions
What are the most pressing needs in
our context?
How should we use our resources for
optimal impact?

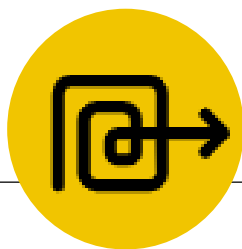


Program Logic Models



● ● ● what a program *does* ● ● ● ●

Evaluation Questions
Are we reaching the intended audience?
What are their perceptions of the program?
What is the quality of program services and materials?



Program Logic Models



● ● ● Changes for individuals, organizations, communities, or society ● ● ●

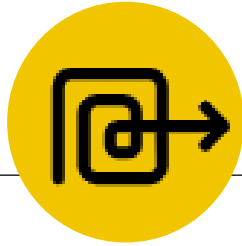


Evaluation Questions

To what extent do program activities lead to changes in what people know, think, or do?

To what extent are these changes sustained?

To what extent did the program affect conditions that initially led to its creation?



Evaluation Across a Program's Lifecycle



● ● ● ● ● Evaluation can occur at any of these levels or across the continuum ● ● ● ● ●



Pitfalls of Evaluation

- Only looking for high-level outcomes
- Thinking data will speak for themselves
- Assuming experimental and quasi-experimental designs will always yield the best information
- Assuming people will use evaluation



Avoiding Pitfalls and Realizing the Promise of Evaluation

- Embrace the fact that evaluations may sometimes be unnecessary or not worth the cost
- Ask the right questions given a program's maturity, scope, and the resources available for evaluation
- Match methods to evaluation questions
- Nurture organizational commitment to learning, using data, and continuous improvement



The Evaluation Center



**Joint Committee on Standards
for Educational Evaluation**
evaluationstandards.org



WESTERN MICHIGAN UNIVERSITY
Interdisciplinary Ph.D. in Evaluation
wmich.edu/evalphd



**Evaluation
Checklist
Project**

wmich.edu/evaluation/checklists



Feed Your Mind.
wmich.edu/evaluation/cafe/events

EvaluATE
evalu-ate.org

JMDE
Journal of MultiDisciplinary Evaluation
jmde.com





Thank You!

www.wmich.edu/evaluation

lori.wingate@wmich.edu