

SOCIAL SERVICE RESEARCH NETWORK (SSRN)

“Building a Conducive Ecosystem for Research in the Social Service Sector: From Findings to Solutions”

Monday, 31 March 2014
Auditorium, Level 1
Civil Service College

Cultivating a Culture of Research – A Practitioner's Perspective

Ms Peh Kim Choo

Director

Hua Mei Centre for Successful Ageing
Tsao Foundation



Hua Mei Centre
for Successful Ageing

A Tsao Foundation Initiative

**SSRN: Building a Conducive Ecosystem for Research in the
Social Service Sector-**

***Cultivating a Culture of
Research – A Practitioner’s
Perspective***

Peh Kim Choo

Hua Mei Centre for Successful Ageing

Tsao Foundation

31 March 2014

Scope of the Presentation

The Practitioner's Worldview –
WHY?

Programme Evaluation Focus –
WHAT?

Collaborative Partnership – HOW?

THE PRACTITIONER'S WORLDVIEW



TSAO'S FOUNDER'S VISION AND MISSION

- Live in one's own home = Ageing in Place
- Be surrounded by loved ones = Inter-generational Solidarity
- Remain master of one's own destiny = Empowerment and Participation
- Have access to decent health care, especially if poor = Focus on Health and Psycho-social Support
- Charitable activities be sustained by self-generated revenue = Social Entrepreneurship



Hua Mei Centre
for Successful Ageing
A Tsao Foundation Initiative
(2009)

**Community-based, interdisciplinary
medical and psycho-social healthcare**

Hua Mei
Training Academy
A Tsao Foundation Initiative

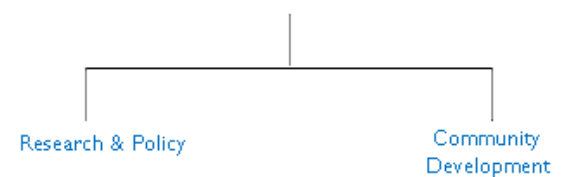
Previously Hua Mei Training Centre (1993)
Renamed Hua Mei Training Academy (2007)

**Training and education in
community-based eldercare**

ILC Singapore
International Longevity Centre
A Tsao Foundation Initiative

Previously Interagency Collaboration (1996)
Relaunched as International Longevity Centre Singapore (2011)

**Community development
programmes, research and
collaboration**



PROGRAMME EVALUATION FOCUS

- *Identifying Goals – knowing your outputs and outcomes beyond your funding KPIs*
- *Data Collection and Mining: Knowing What to Collect, Use of Consistent Assessment Tools, Process and Impact Evaluation*
- *Programme Evaluation as an Integral Part of Programme Design*
- *Understanding the Purpose of Evaluation and Research*
- *Understanding the ‘Mindset’ of the Researchers*
- *Speak the Research Lingo*
- *Educating the Researcher*

Collaborative Partnership

- ***Initiate the Relationship***
- ***Scoping the Research/Evaluation Together***
- ***Custodian of the Research Outcome***
- ***Regular Meetings***
- ***Defining Expectations, Timelines and Roles***
- ***Partners in Data Collection***
- ***Joint Publication***





Hua Mei Centre
for Successful Ageing

A Tsao Foundation Initiative

Thank You

