

SOCIAL SERVICE RESEARCH NETWORK (SSRN)

“Building a Conducive Ecosystem for Research in the Social Service Sector: From Findings to Solutions”

Monday, 31 March 2014
Auditorium, Level 1
Civil Service College

Developing Research on Rehabilitation and Protection: The Lego Approach

Dr Chu Chi Meng

Senior Assistant Director and
Principal Clinical and Forensic Psychologist
Rehabilitation and Protection Group
Ministry of Social and Family Development



Developing Research on Rehabilitation
& Protection:
“The LEGO Approach”

*Dr. Chu Chi Meng
Senior Assistant Director
Principal Clinical & Forensic Psychologist
Centre for Research on Rehabilitation and Protection
Rehabilitation and Protection Group*

Rehabilitation & Protection Group (RPG)

RPG's Core Businesses



Rehabilitating Offenders



Protecting Children



Other Branches Under RPG

Probation Services Branch

Juvenile Homes Branch

Children In Care Branch

Family and Child Protection Welfare Branch

Programmes Branch

Operation Branch

Policy Branch

Human Resource Unit

Clinical and Forensic Psychology Branch

Corporate Services Unit

Strategic Thrusts



Knowledge
Transfer



Research
Advisory



Data Curation



Improve
accountability of
programmes and
practices



Strengthen
collaboration with
internal and
external



Talent and
Capability
Development

C
entre

for

R
esearch

on

R
ehabilitation

and

P
rotection

Our Mission

1. We conduct rigorous research on rehabilitation and protection
2. We collaborate with partners to build research capabilities.
3. We contribute to sound policies and practices.

Vision

To be a leading
research centre in Asia
on rehabilitation and
protection by 2020

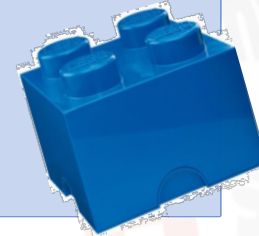
Moulding better lives through
improving knowledge



Master Plan

Stock take previous research and understand RPG research needs

- Strategic Planning for the CRRP

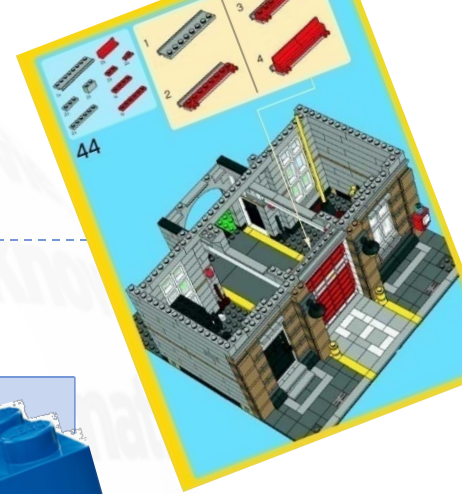


Develop research agenda for RPG (2014 - 2018)

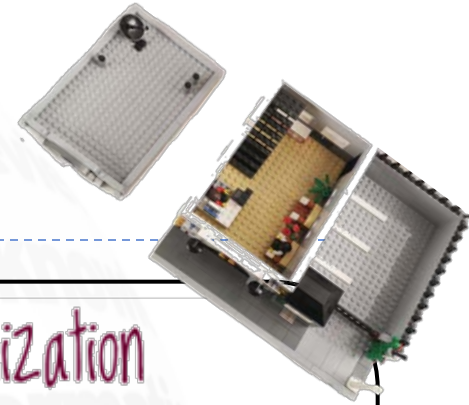
- Develop research infrastructure for RPG



Engage internal and external partners to conduct research collaboratively



How we do it...



Longitudinal Studies
Research Advisory Panel Outcome Studies
Research Funds Developing Talent
Publications Dissemination Policy Research Developing Capabilities
Prevention Programme Evaluation Forecasting
Data Linkage Optimization
Prediction Data Sharing Opening Doors
Cost Benefit Analyses
Win-win Collaboration

Thru' our values

Creative

Passionate

Respectful

Responsible

Research in Action



Tracking of long-term outcomes for Child Protection and Child Welfare clients



Collaborating with Child Protection Service, RP-Policy as well as Department of Statistics and Ministry of National Development



To collaborate with other agencies for data-linkage



To examine effectiveness of programmes and to conduct cost-benefit analyses



Ultimate goal is to work toward better life outcomes for our children

Our Challenges

Data management and research infrastructure

Differences in expectations

Unrealistic Deadlines

Translation of findings into practice and policy

Many requests but limited manpower





Collaboration Partners

Collaboration with Internal Partners

Probation Services Branch

Children in Care Branch

Family and Child Protection Welfare Branch

Juvenile Homes Branch

Strategic Planning and Research Development Division

Clinical and Forensic Psychology Branch

Family and child protection and welfare branch

Collaboration with External Agencies



