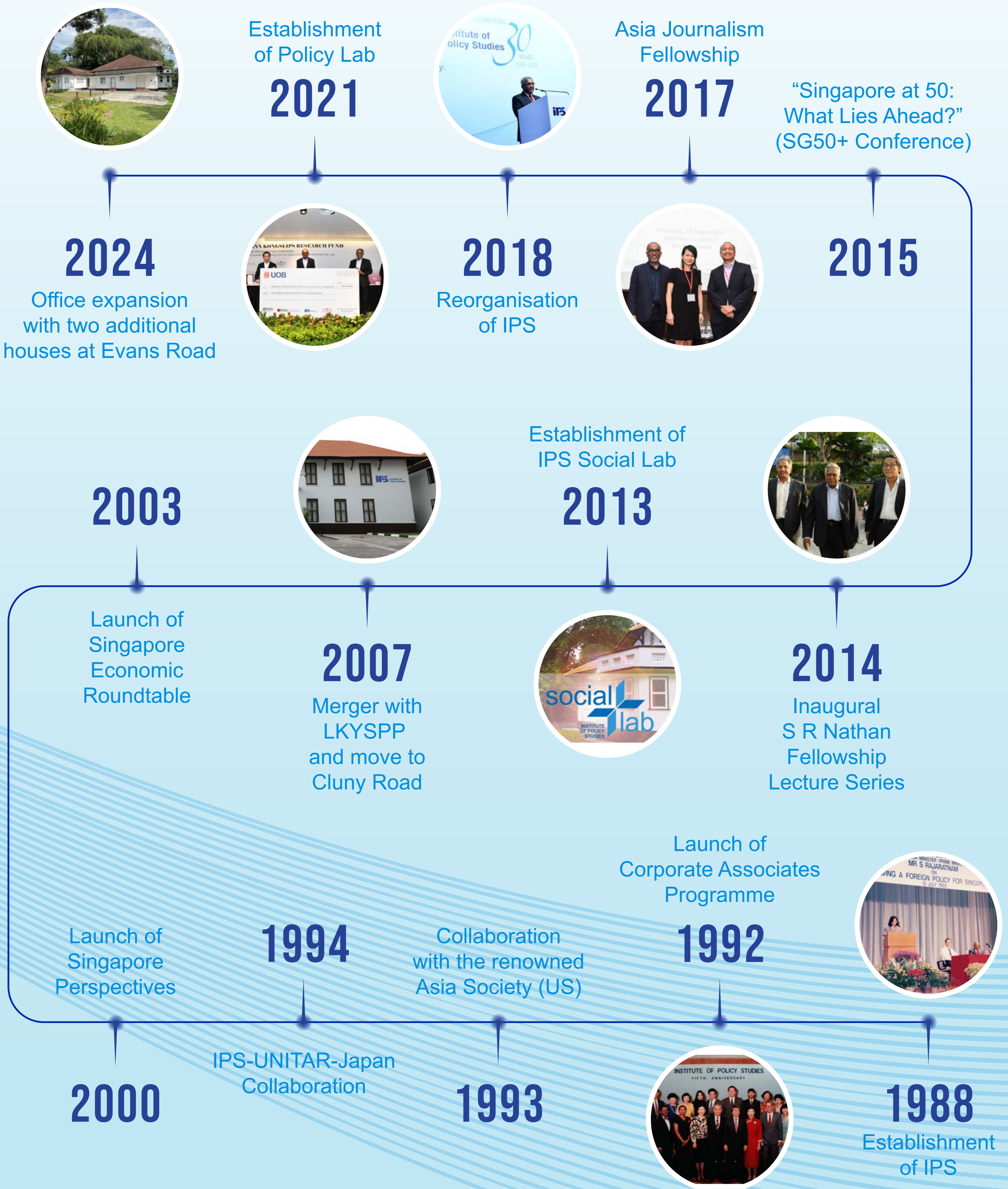


INSTITUTE OF POLICY STUDIES

ENGAGING MINDS EXCHANGING IDEAS



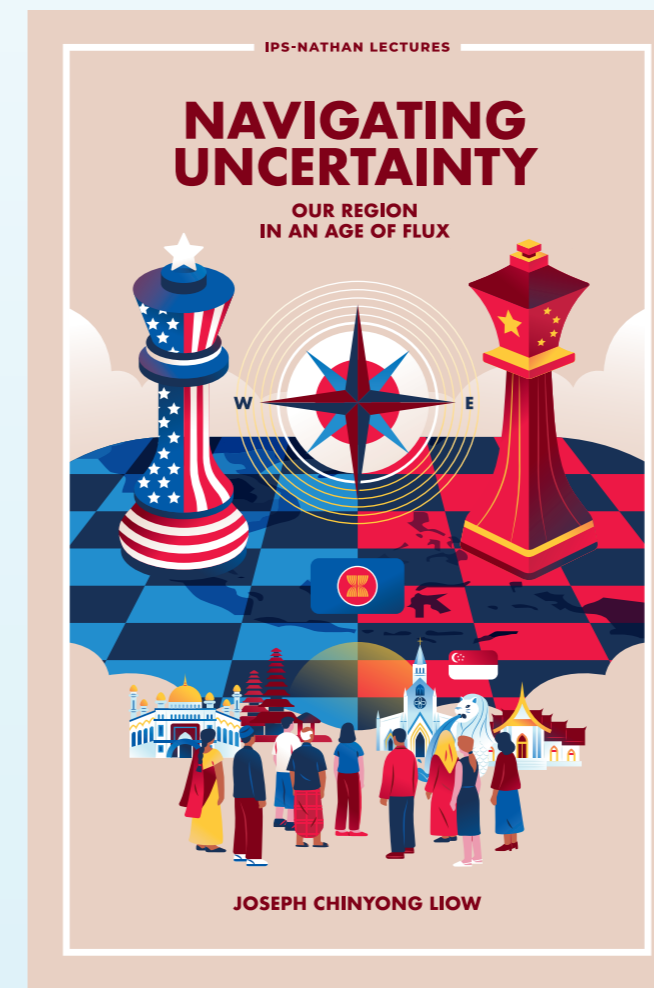
PUBLIC ENGAGEMENT

ENGAGING THE MINDS OF THE PUBLIC

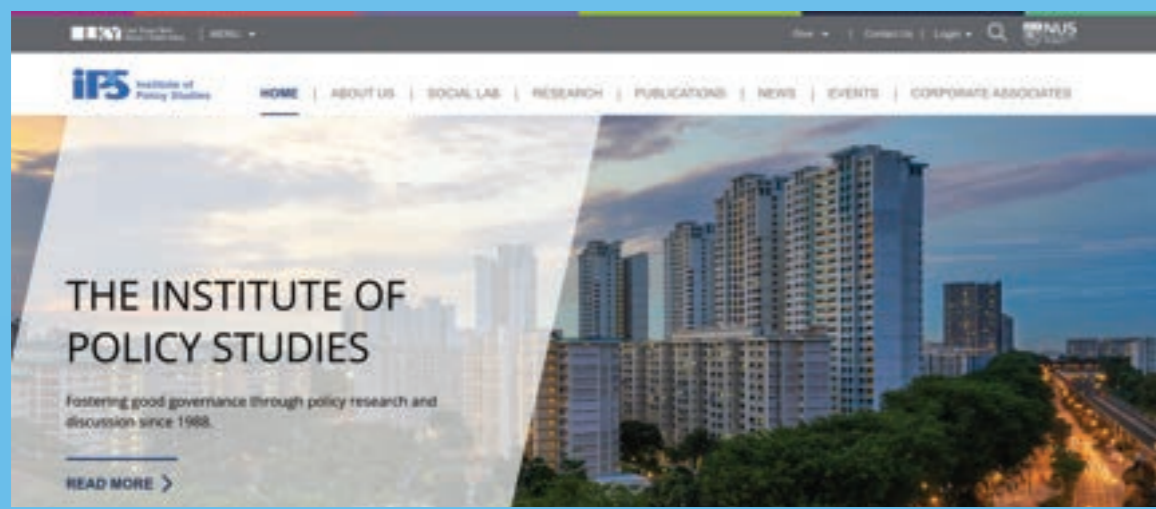
SINGAPORE CHRONICLES SERIES



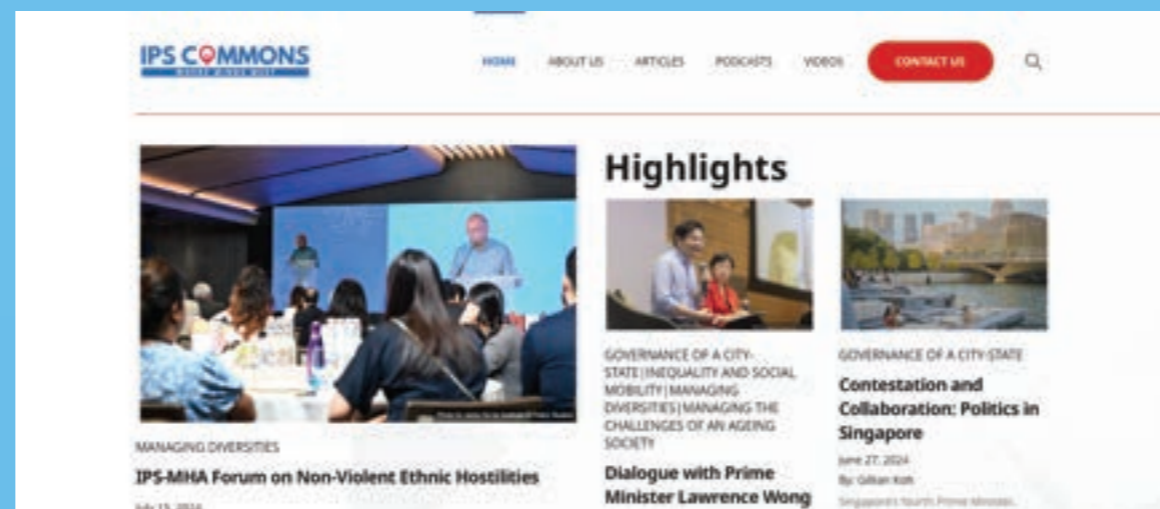
S R NATHAN FELLOWSHIP LECTURE SERIES



IPS WEBSITE



IPS COMMONS



IPS ON DIVERSITY PODCAST



IPS COMMENTARIES

How parents and kids can be better off if we widen concept of merit

Tan Poh Lin
The Straits Times

The corporate tax contribution in sustaining Singapore's social compact

Christopher Gee, Yap Jia Hui
The Business Times

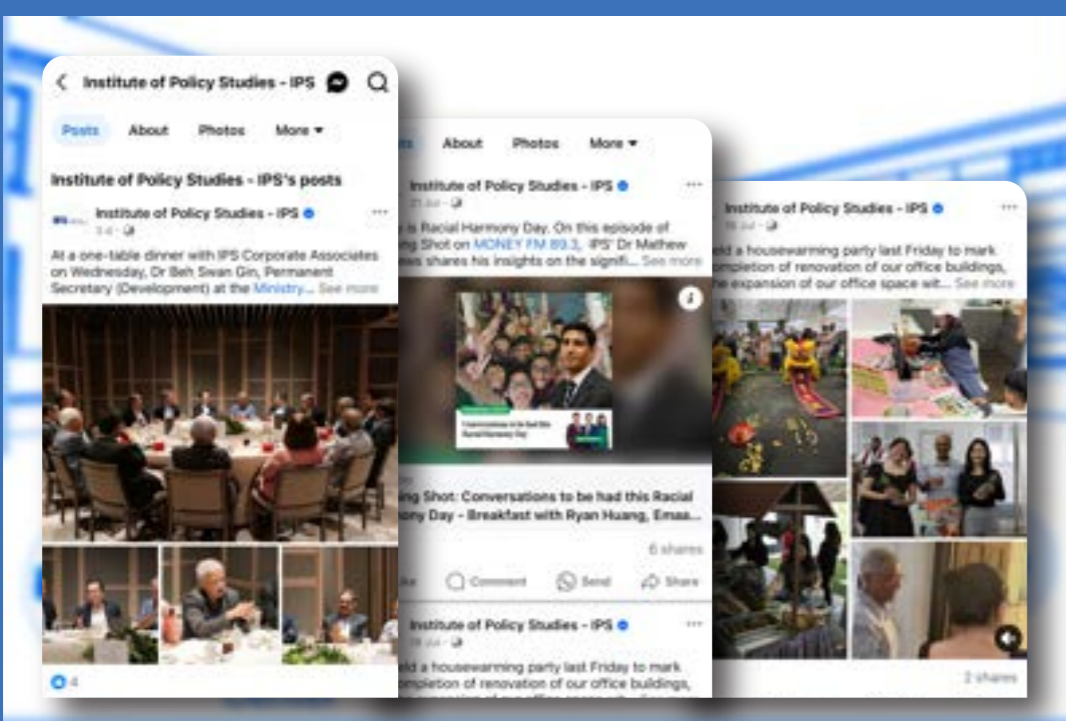
In discussing Israel-Hamas conflict in Singapore, upholding social harmony is key

Mathew Mathews, Hazim Zulfadhli
Today

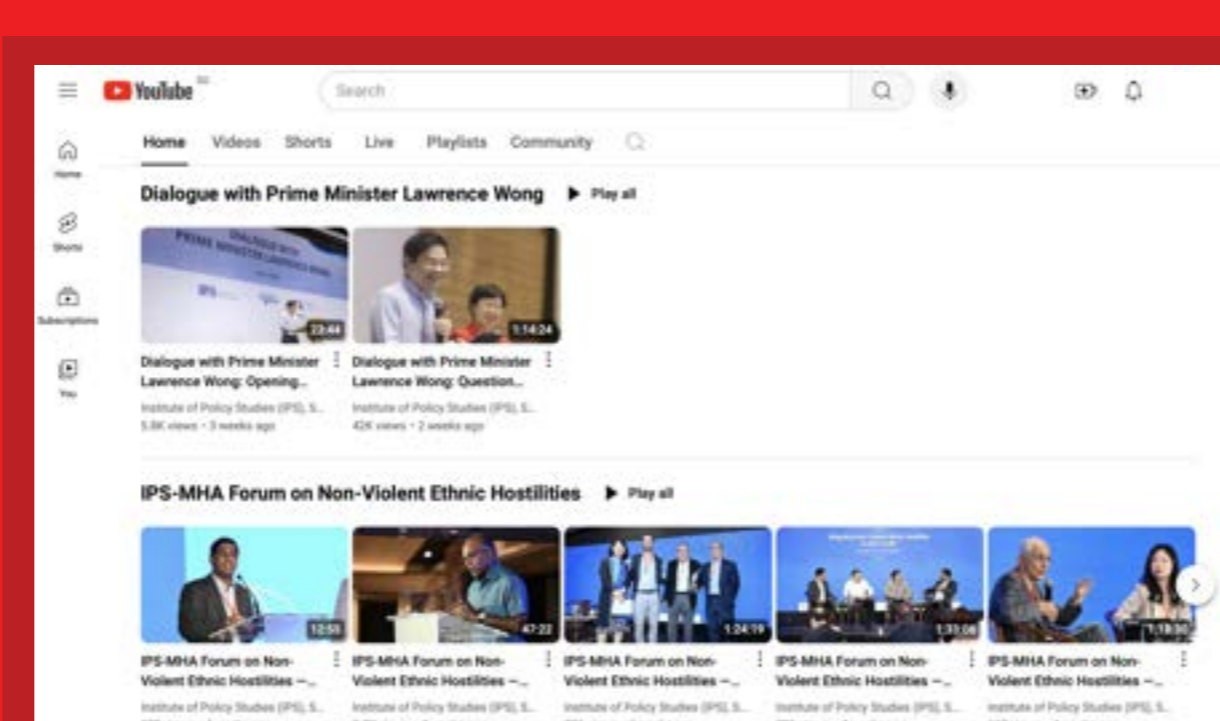
The tussle over TikTok isn't just geopolitics

Carol Soon, Chew Han Ei, Ann Mak
CNA

FACEBOOK @IPSLKYSPP



YOUTUBE @ipspore



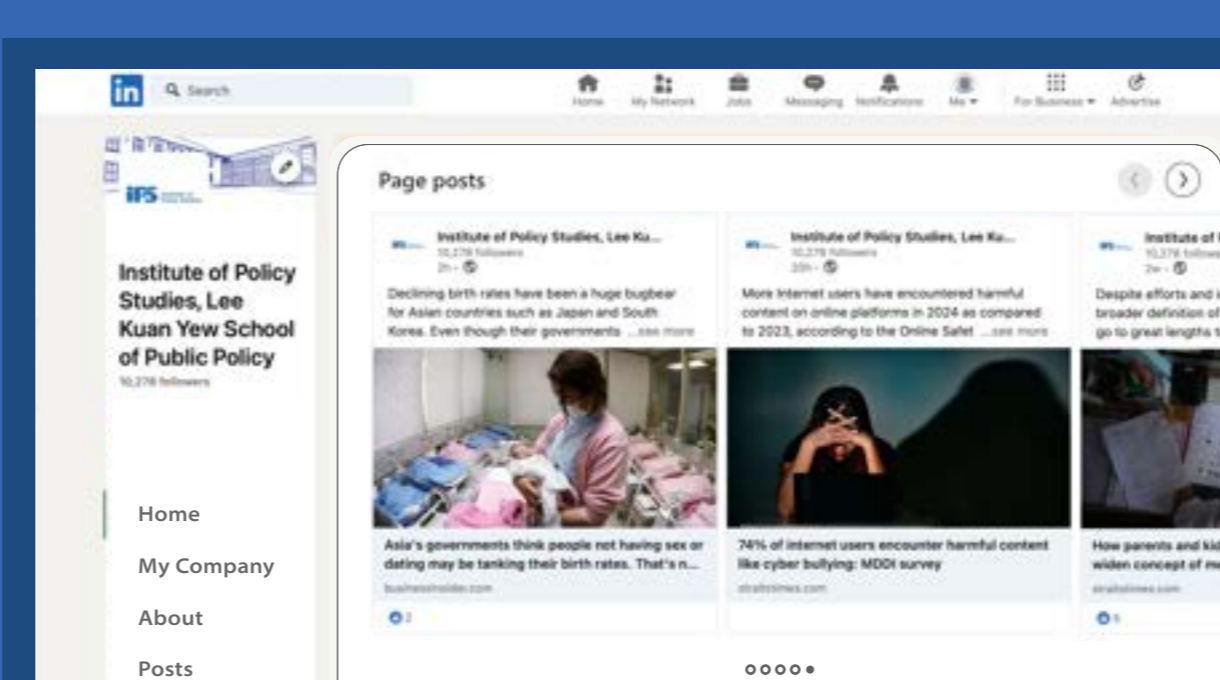
INSTAGRAM @IPS_sg



X @IPS_sg



LINKEDIN Institute of Policy Studies, Lee Kuan Yew School of Public Policy



TIKTOK @IPS_sg



EVENTS

SINGAPORE PERSPECTIVES

"Youth"



Director Janadas Devan delivering opening remarks at Singapore Perspectives 2024

IPS 35TH ANNIVERSARY CONFERENCE

Revisiting



Mr Lawrence Wong speaking on the topic of "revisiting our social compact".

REINVENTING DESTINY

A Conference on the Occasion of Mr Lee Kuan Yew's 100th Birth Anniversary



Prof Chan Heng Chee speaking on the panel titled "The Small State in a Turbulent World"

S R NATHAN FELLOWSHIP FOR THE STUDY OF SINGAPORE



1st S R Nathan Fellow, Mr Bilahari Kausikan



2nd S R Nathan Fellow, Mr Peter Ho



3rd S R Nathan Fellow, Mr Lim Siong Guan



4th S R Nathan Fellow, Dr Cheong Koon Hean



5th S R Nathan Fellow, Prof Tan Tai Yong



6th S R Nathan Fellow, Prof Chan Heng Chee



7th S R Nathan Fellow, Ms Corinna Lim



8th S R Nathan Fellow, Mr Ravi Menon



9th S R Nathan Fellow, Dr Noeleen Heyzer



10th S R Nathan Fellow, Mr Patrick Daniel



11th S R Nathan Fellow, Prof Wang Gungwu



12th S R Nathan Fellow, Prof Joseph Liow



13th S R Nathan Fellow, Mr Tan Chong Meng

SINGAPORE ECONOMIC ROUNDTABLE



37th Singapore Economic Roundtable
Mr Chee Hong Tat



39th Singapore Economic Roundtable
Mr Gan Kim Yong

YOUNG SINGAPOREANS CONFERENCE



ASIA JOURNALISM FELLOWSHIP

The Asia Journalism Fellowship is a Temasek Foundation (TF) programme hosted by the Institute of Policy Studies (IPS). The Fellowship is a highly regarded mid-career programme for journalists, valued as time out from the newsroom for Fellows to recharge, learn, understand more about one another's countries and get to know Singapore.



IPS NEWS FELLOWSHIP

The Fellowship is designed to provide outstanding mid-career journalists with an opportunity to take a short sabbatical from their regular work and spend three months at IPS to write a research paper or monograph, or conduct a project on a societal issue in Singapore.



Nigel Chua
Mothership



Justin Ong
TODAYonline



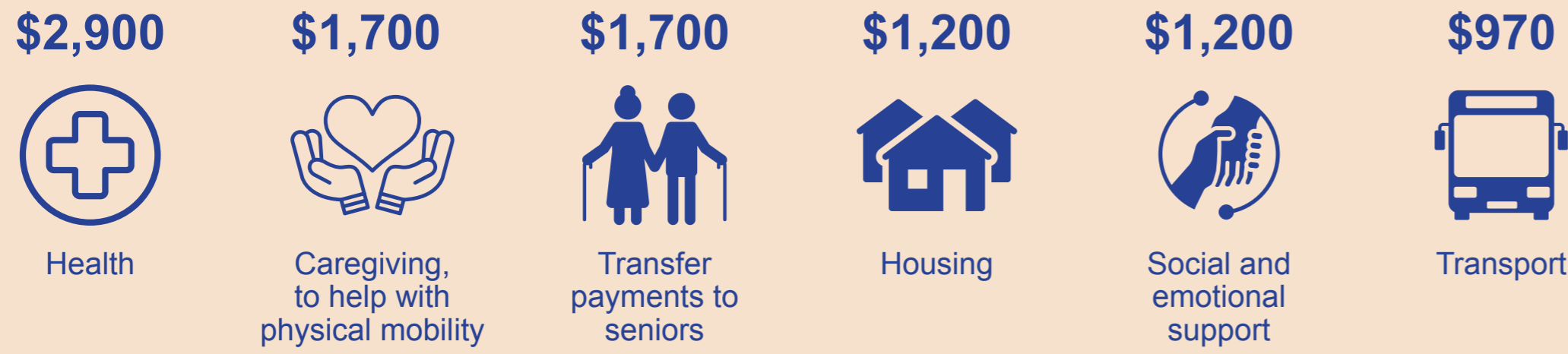
MANAGING THE CHALLENGES OF AN AGEING SOCIETY

RESEARCH PROJECTS AND PROGRAMMES

PUBLIC DELIBERATION ON AGEING RELATED SOCIAL SPENDING IN SINGAPORE

A group of 72 citizens of different ages and socio-economic backgrounds discussed Singapore's ageing-related policies over two, one-day workshops.

Participants were asked how they would allocate extra funding of \$10,000 per person for age-related policies and programmes from the government in a hypothetical scenario.



When asked how they would imagine finding the hypothetical \$10,000 a month to meet their needs in their senior years, the average amount of money that participants indicated they would draw from among six possible sources were:



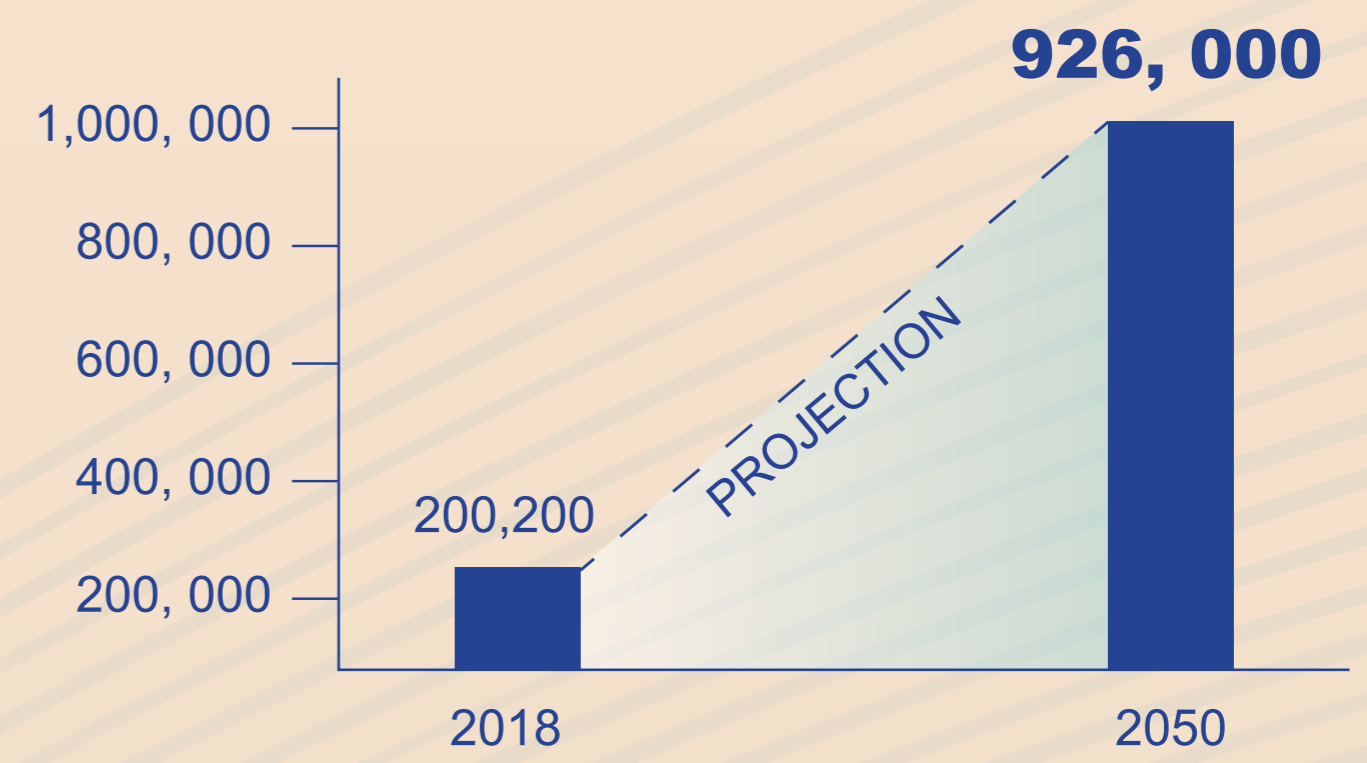
LEAVING WELL: END-OF-LIFE POLICIES IN SINGAPORE

The report focuses on the need to address the gap between the preferences of "peaceful death" compared to how one may pass away in reality.



Lien Foundation survey in 2014

Estimated number of singaporeans aged 75 and above by 2050



Key recommendations about end-of-life decisions

- The restrictions under Section 13(8) of the Mental Capacity Act must be emphasised to families.
- Palliative care providers should involve religious leaders in end-of-life conversations.
- Start the difficult conversations on death and dying.
- Develop the palliative care sector further, in terms of providing financial incentives and manpower.
- Simplify paperwork for family members when they make end-of-life plans.

SCAN HERE TO FIND OUT MORE



INEQUALITY AND SOCIAL MOBILITY

RESEARCH PROJECTS AND PROGRAMMES

THE Ngee Ann Kongsi - IPS Citizens' Panel ON EMPLOYMENT RESILIENCE

The Ngee Ann Kongsi - IPS Citizens' Panel on Employment Resilience, held over four sessions in February and March 2023, saw the participation of 59 Singaporeans and Permanent Residents (PRs).

They included employees, employers, employment intermediaries and the unemployed. Together, they co-created recommendations for



SCAN HERE TO FIND OUT MORE



MANAGING DIVERSITIES

RESEARCH PROJECTS AND PROGRAMMES

IPS PROGRAMME ON RACE, RELIGION, AND INTERGROUP COHESION (RRIC)

In October 2022, The Silent Foundation (TSF) pledged \$2.5 million to the Institute of Policy Studies, National University of Singapore (IPS) over a period of five years for this programme. With their generous support, the IPS RRIC has since been able to develop innovative training workshops and engagements that complement existing efforts in promoting harmony across race, religion and various other potential fault lines in our society.

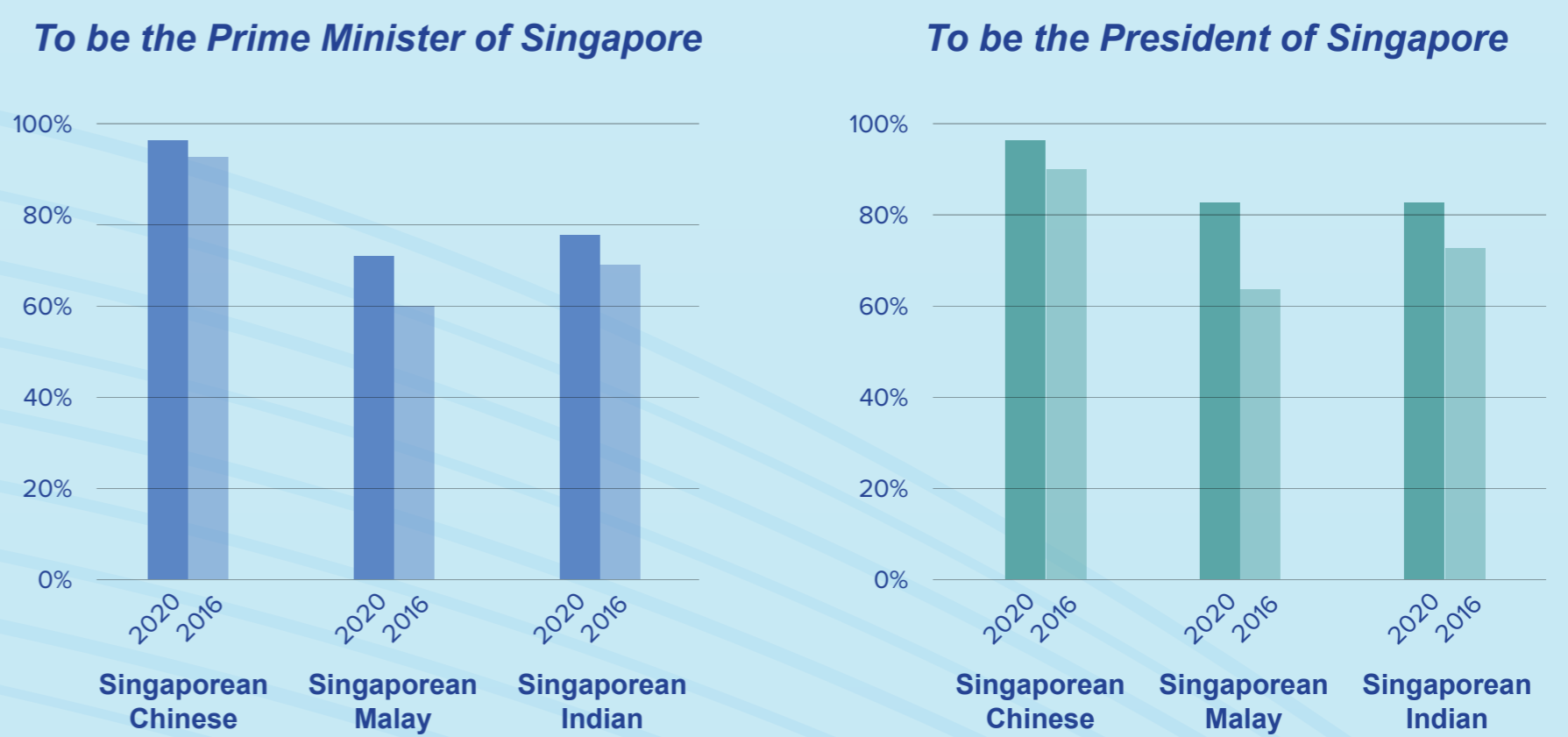


SCAN HERE TO FIND OUT MORE

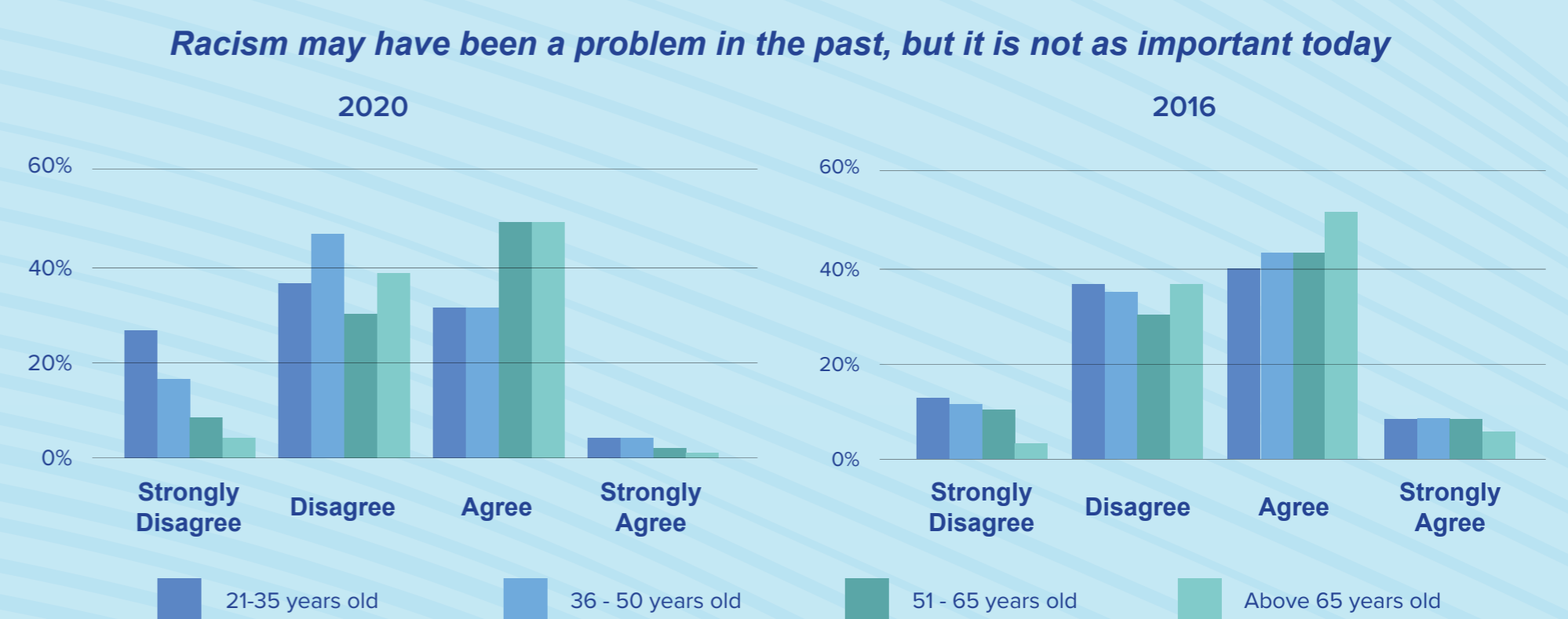
CNA-IPS SURVEY ON RACE RELATIONS

The 2021 wave of the CNA-IPS Survey on Race Relations re-examines issues of race that were initially probed in the 2016 edition of the survey. It also asks new questions on race-related topics that have become more prominent since then.

RESPONDENTS' RACIAL PREFERENCES IN POLITICAL REPRESENTATION



VIEWS ON THE PROBLEM OF RACISM BY RESPONDENTS' AGE



GOVERNANCE OF A CITY-STATE

RESEARCH PROJECTS AND PROGRAMMES

FAKE NEWS AND THE INFORMATION ECOSYSTEM

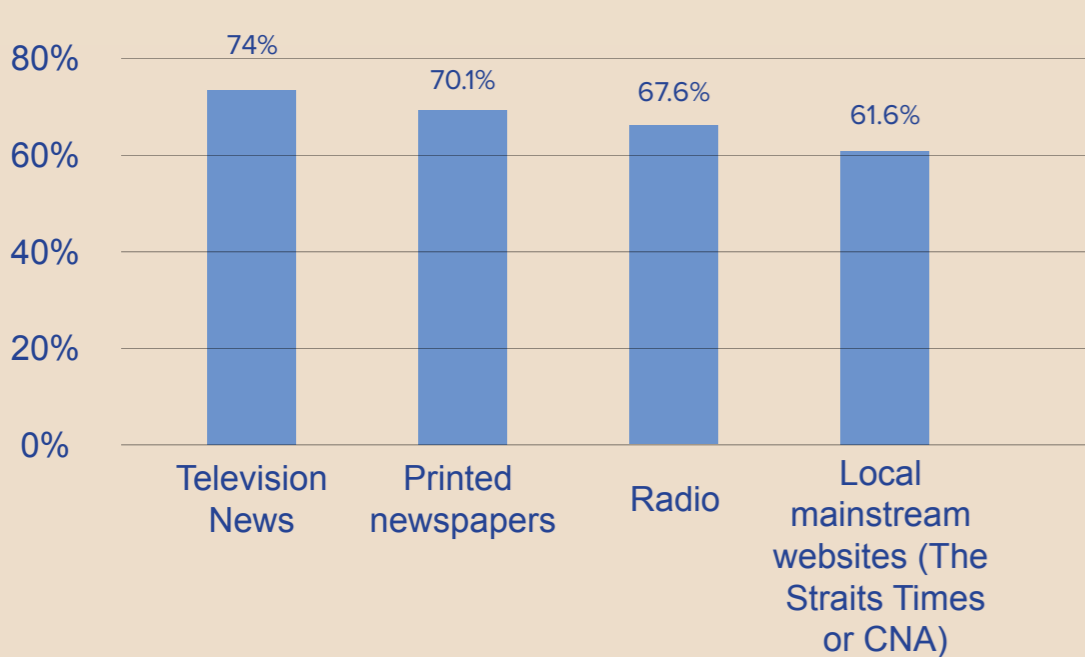


6 in 10 have encountered and believed false information in the form of text or images

They were more likely to be more susceptible to false information

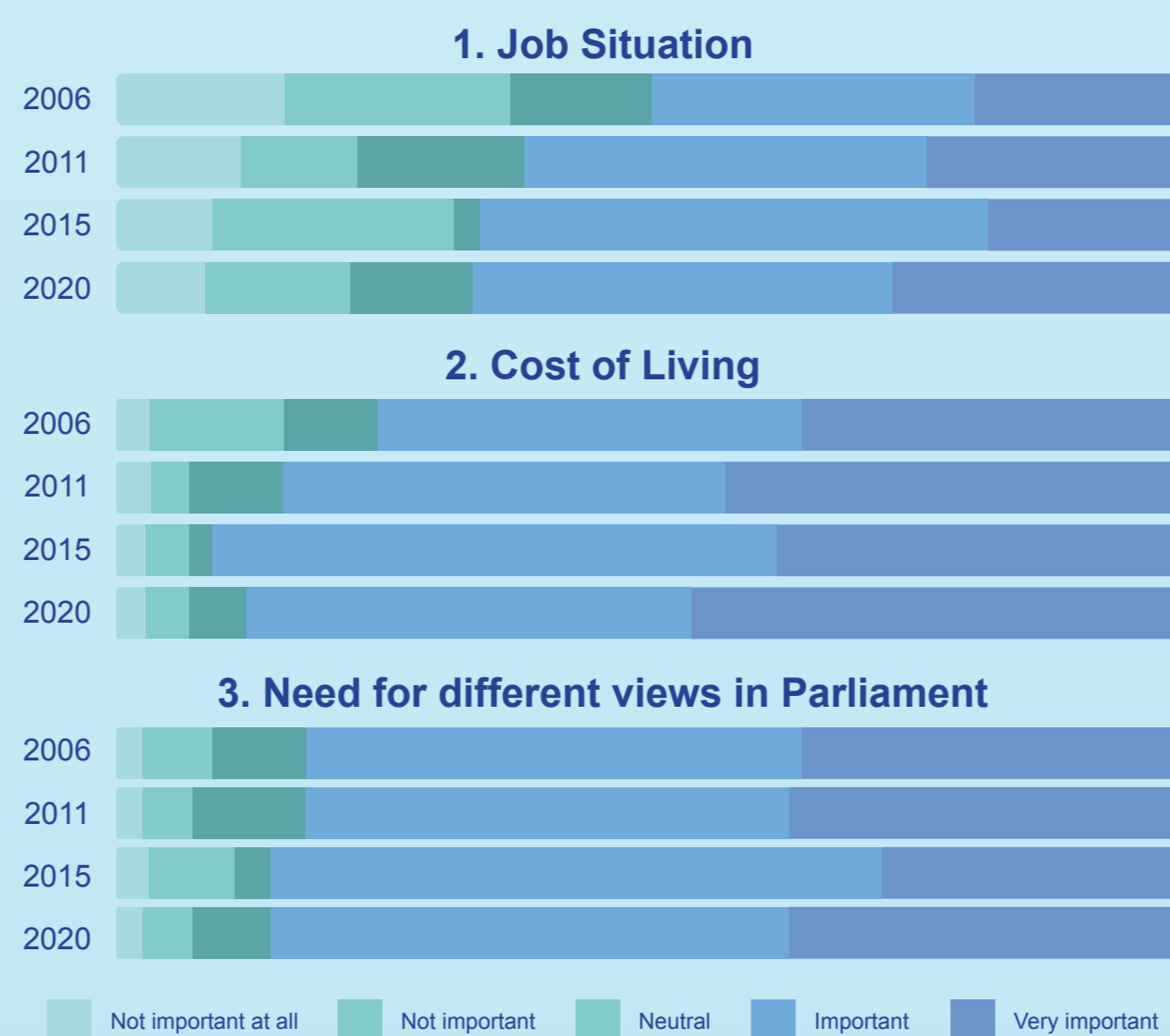
- Seniors
- Living in one- to three-room HDB flats
- Lower levels of knowledge about the media and information landscape

Trustworthiness of local legacy/mainstream media



PERCEPTION OF POLICIES IN SINGAPORE SURVEY (POPS) - IPS POST-ELECTION SURVEY ON GE2020

The three issues had the largest increases in 'very important' rating of 9% compared to 2015:



TOP 7 IMPORTANT ISSUES IN SHAPING VOTING DECISION

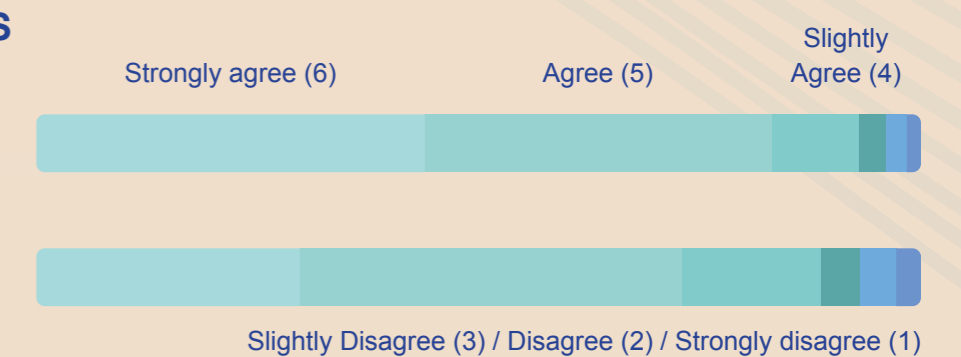
- Need for efficient government
- Fairness of government policy
- Government help for the needy
- Government's handling of Covid-19 crisis
- Need for checks and balances in Parliament
- Cost of living
- Need for different views in Parliament

IPS STUDY ON PUBLIC ATTITUDES TOWARDS NATIONAL SERVICE (NS)

Public Support for NS

I would support compulsory NS, even if there is no immediate threat to Singapore.

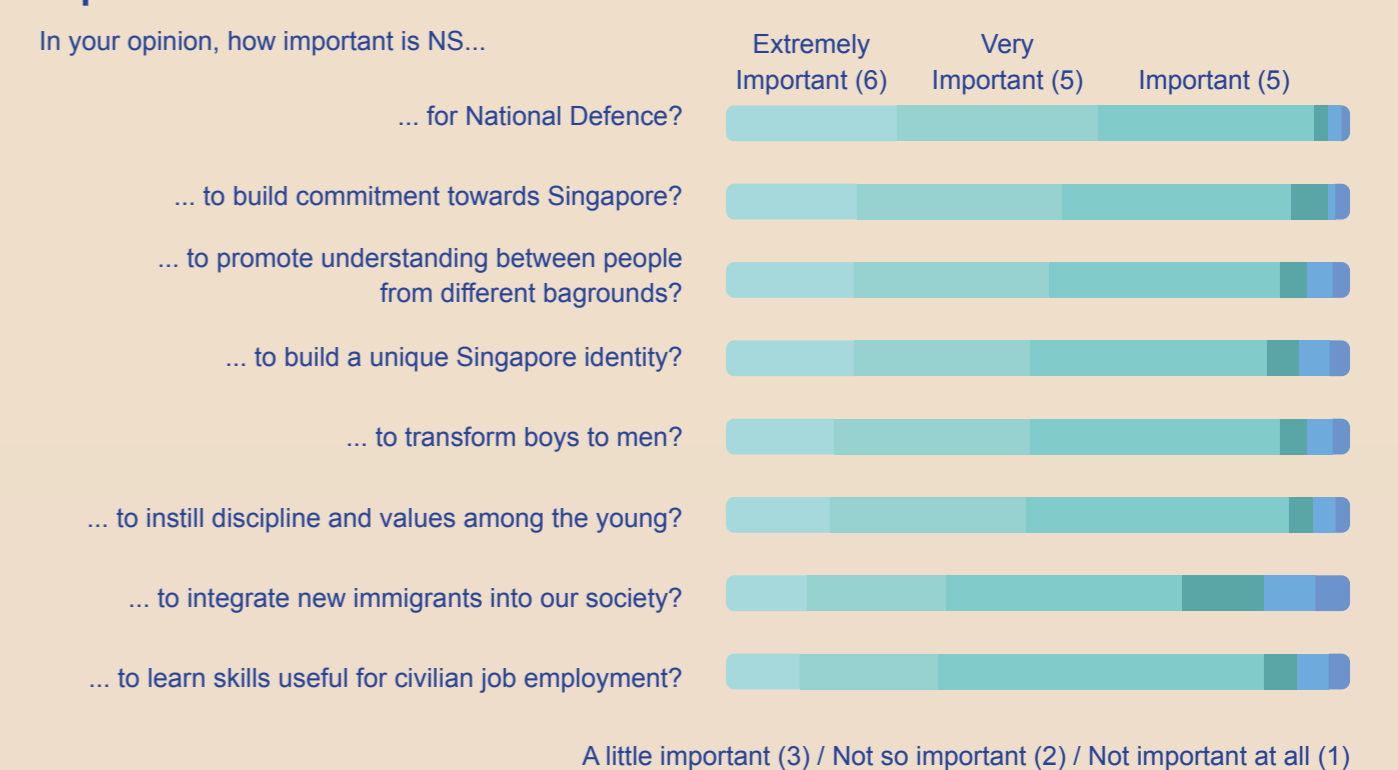
I would encourage my friends and loved ones to serve NS even if NS is not compulsory.



The nationally representative study found that majority of the respondents (93%) would support compulsory NS, even if there were no immediate threats to Singapore. They would also encourage their friends and loved ones to serve NS if it were optional (88%).

The study suggested that the importance of NS for defence is highly important, but it is viewed as less important for learning useful skills for employment.

Importance of NS across various functions



A little important (3) / Not so important (2) / Not important at all (1)

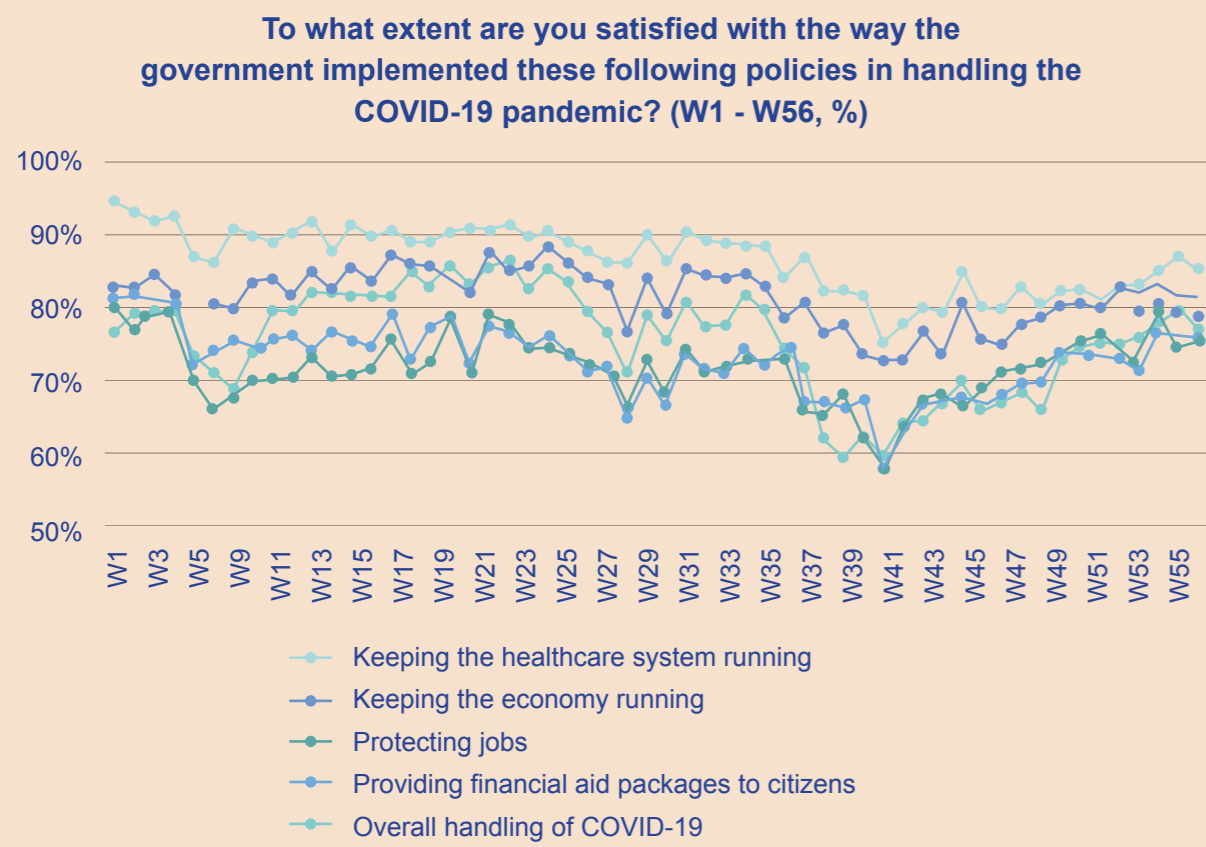
SCAN HERE TO FIND OUT MORE



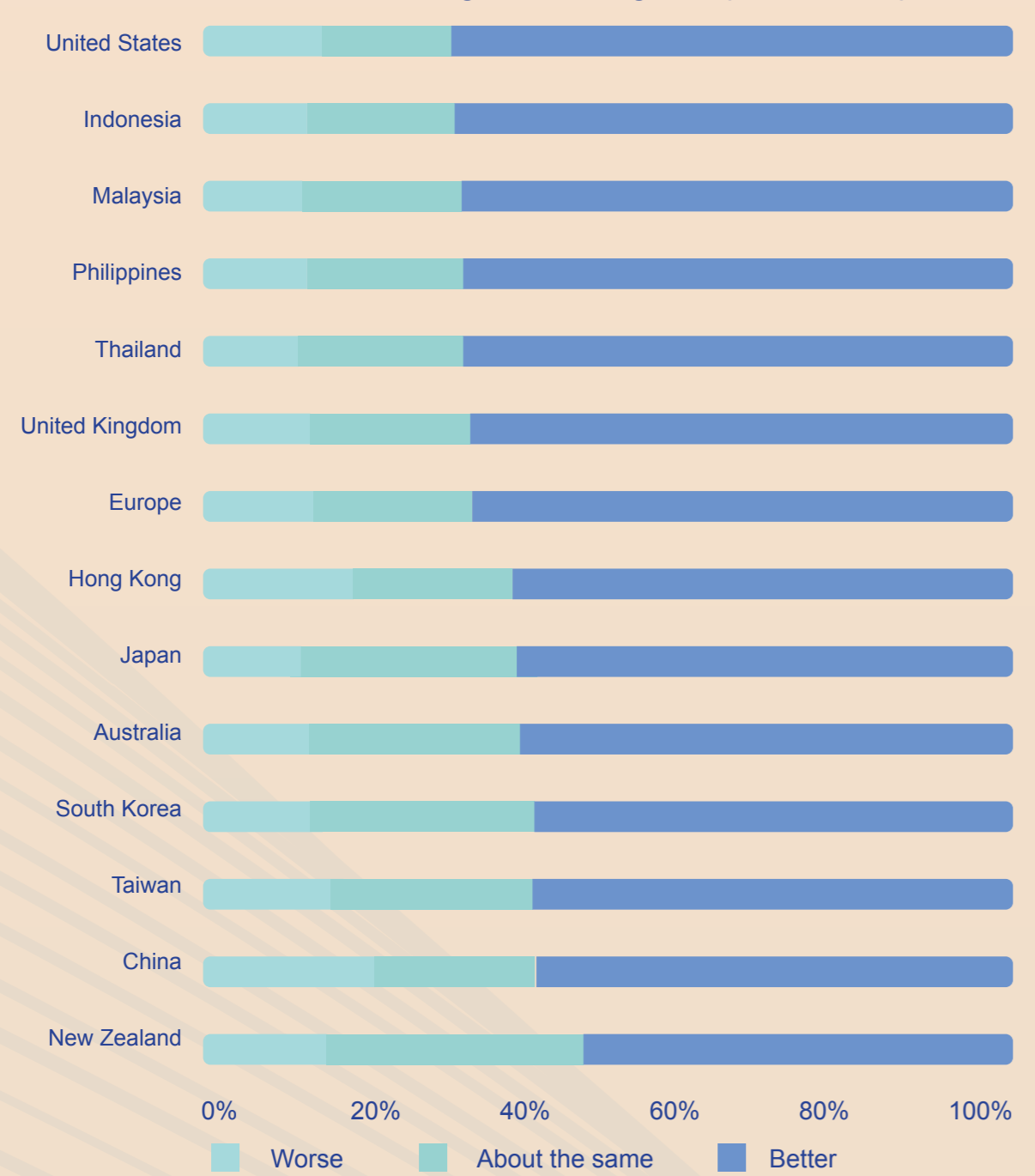
IPS SOCIAL LAB

SATISFACTION WITH GOVERNMENT'S HANDLING OF COVID-19 IN SINGAPORE

This paper reviews Singaporeans' satisfaction with the government's COVID-19 pandemic management from the period of April 2020 (Wave 1) to November 2022 (Wave 56). It also examines perceptions of Singapore's pandemic response in comparison with other countries or regions, and the importance of government satisfaction in predicting perceptions of Singapore's pandemic response.



Overall, do you think Singapore's pandemic response was worse, about the same, or better than the following countries/regions? (W52 - W55, %)

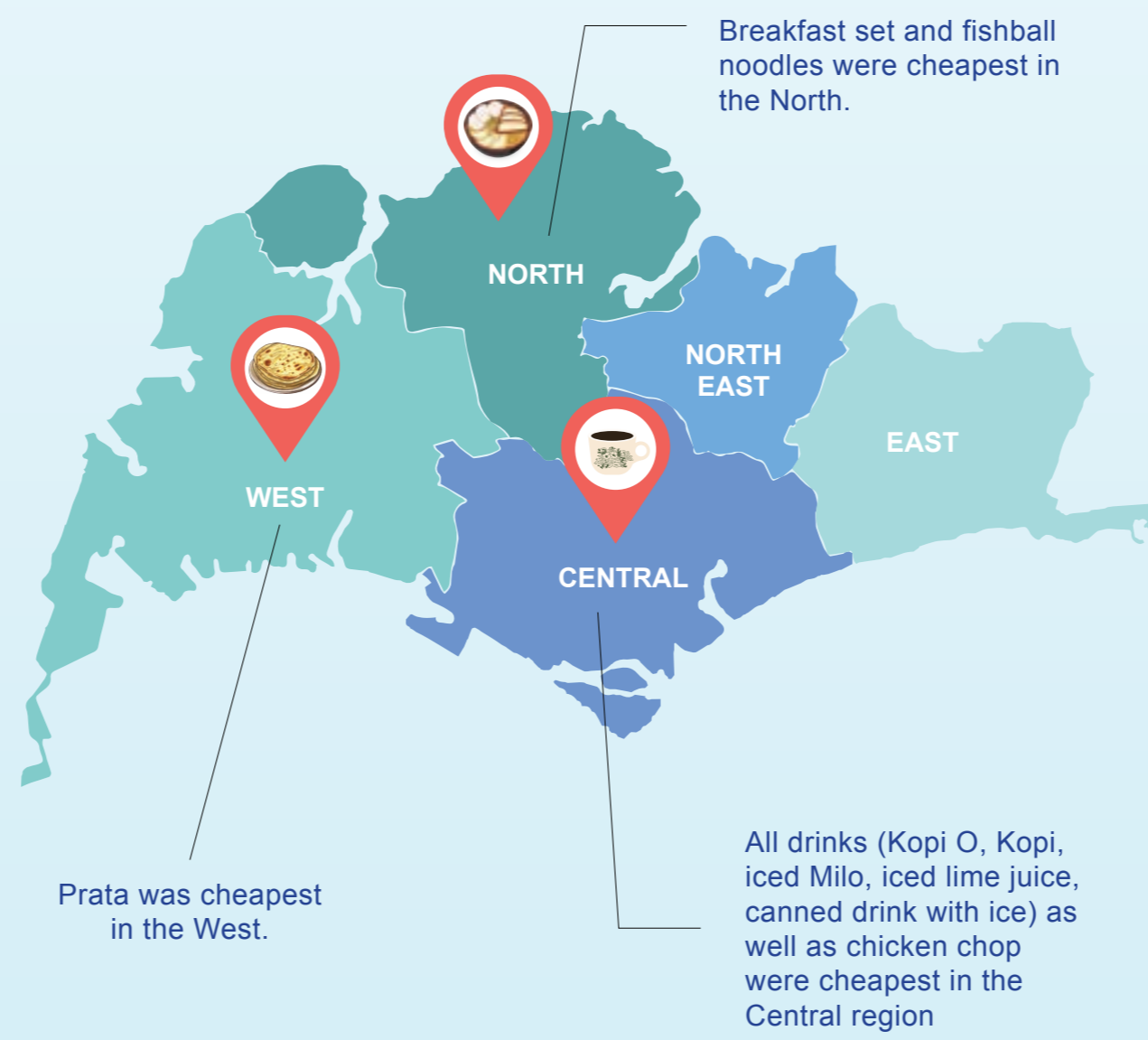


Around 52 per cent of the respondents aged 21 to 29 indicated that Singapore performed better than China in its pandemic response, compared to 67 per cent of those aged 60 and above.

MAKAN INDEX 2.0

The project looks at the prices of 18 food and drink items or sets commonly sold in hawker centres, kopitiam and food courts.

In two rounds of fieldwork in late 2022 and early 2023, the team surveyed a total of 829 food establishments – consisting of 92 hawker centres, 101 food courts and 636 kopitiam – in 26 residential neighbourhoods in Singapore.



\$16.89

Average cost of 3 meals a day

\$506.70

Average cost of 3 meals a day for a month

In conclusion, the cost of eating out in Singapore is likely to continue to rise relative to individual and household incomes in the future. The hope is that real wages will increase at similar rates; if not, individuals and households will face higher food costs. While hawker culture in Singapore is an essential and convenient source of hot, delicious meals for Singaporeans, it may no longer be able to remain as cheap relative to other meal options, given the changes in the economic environment.

YOUTH STUDY ON TRANSITIONS AND EVOLVING PATHWAYS IN SINGAPORE (YOUTH STEPS)

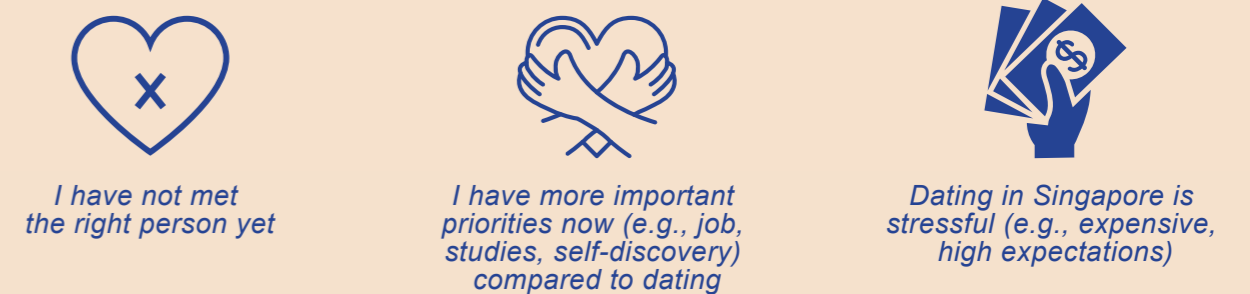
The first national longitudinal study on youths explored their life satisfaction, key aspirations and priorities as they transition from adolescence to adulthood. The longitudinal study was conducted on about 3,000 youths aged between 17 and 24, over a period of six years (2017 to 2022).

Majority of youths were satisfied with life, as showed from findings in 2021 and 2022. Detailed findings showed that youths:



However, youths still faced barriers in dating and being in relationships. By 2022, two in five (39%) had never been in a relationship.

Top 3 Barriers to Dating among Single Youths



SINGAPORE PANEL STUDY ON SOCIAL DYNAMICS (SPSSD)

The study began with a panel of respondents from 5,002 households in Singapore in Wave 1

Marriage could be perceived as a greater matter of concern by women compared to men.



The stress of heading a household appeared to be greater among



SCAN HERE TO FIND OUT MORE



IPS POLICY LAB

IPS Policy Lab is a policy innovation unit that conducts solutions-focused research to develop and test ideas for social and institutional change. It reviews the existing evidence and curate new ideas; co-design and incubate solutions with relevant communities; then determine their viability and scalability through policy experiments or pilots. The work of the Policy Lab helps move IPS from 'a think tank' to a 'think-and-do tank'.

Our work often involves multi-party partnerships and we encourage you to examine our pipeline projects and get in touch if you are keen to collaborate in co-developing and implementing these solutions.

THE Ngee Ann Kongsi Community Fellowship

The Ngee Ann Kongsi is supporting fellowships at IPS for community leaders and change-makers to test-bed innovative interventions or implement community-based participatory research projects that can contribute to community development or social change.

By conducting social policy experiments on the ground that advance solutions which can be scaled up and applied on a national level, it builds crucial missing linkages between academics, the non-profit social sector and policymakers, translating their work into more impactful and effective change for everyday Singaporeans.

The Fellowship will be conducted on part-time basis for the duration of a year so that Fellows can complete their projects while continuing to work under flexible conditions acceptable to their current employer.



NG BEE LENG

Director of Community Development and Corporate Support at AMKFSC Community Services Ltd

Ms Ng is conducting research on community-owned development



LEE UNSU

Independent researcher

Mr Lee is piloting a worker-owned social enterprise project with Beyond Social Services.



NURHIDAYAH BINTE SAZALI

Community Connector with South Central Community Family Service Centre

Nurhidayah will conduct a community-based participatory research project with low-income mothers of young children



ADRIAN TAN

Co-Founder of SG Assist

Adrian will co-design and co-implement a timebank with IPS, social service agency partners and the community of users

FUTURE-READY SOCIETY

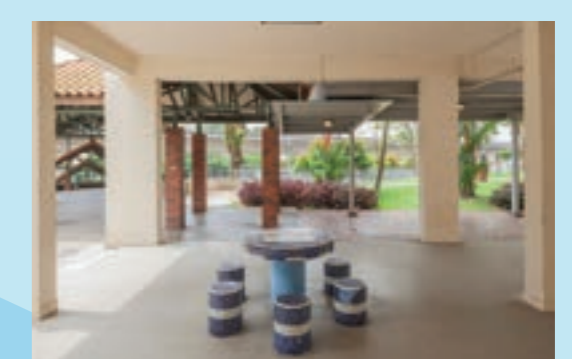
Recognising the need for future-readiness, and the resources and expertise required to create it, the Future-Ready Society programme was jointly started in 2023 by Tote Board, the Lee Kuan Yew Centre for Innovative Cities, and IPS Policy Lab.

This creates a tripartite partnership to take advantage of the pooled capabilities to activate the People-Private-Public (3P) sectors in expanding the knowledge base, creating new community-based initiatives, and testing solutions for Singapore's shared future.



GIVING CIRCLES

Mobilises 5-7 families to give directly and top up the income of a family with lesser means to a minimum level required to provide stability.



PARTICIPATORY BUDGETING

Residents in a local community developing ideas, deliberating and then deciding on the use of the discretionary budget (possibly of a Town Council).

SCAN HERE TO FIND OUT MORE

