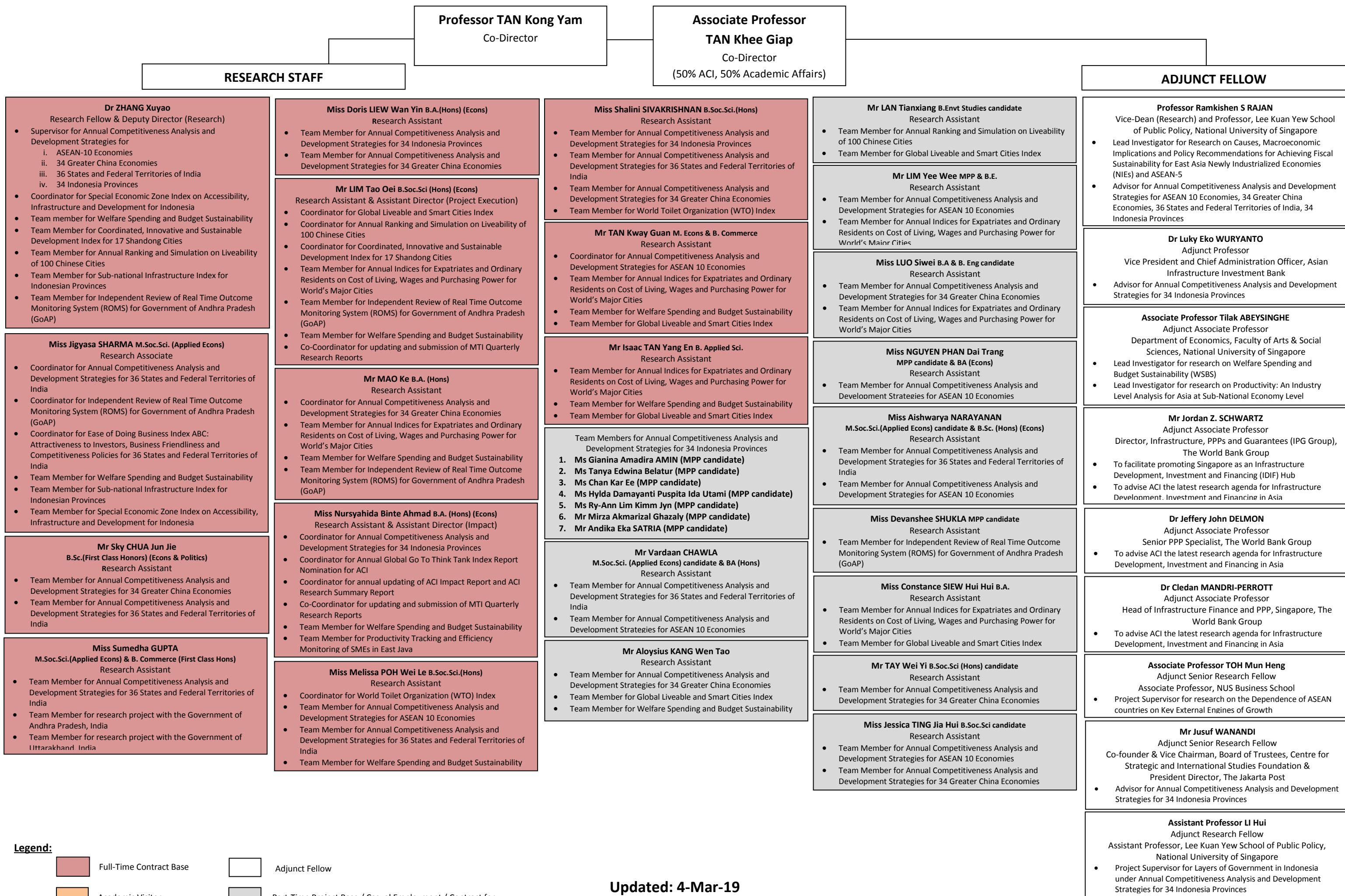


CORPORATE STRUCTURE OF ASIA COMPETITIVENESS INSTITUTE (Research Staff, Adjunct Fellow) – as of 4 March 2019



Legend:

- Full-Time Contract Base
- Academic Visitor
- Adjunct Fellow
- Part-Time Project Base / Casual Employment / Contract for Services

Updated: 4-Mar-19
Vetted By: Co-Director, ACI