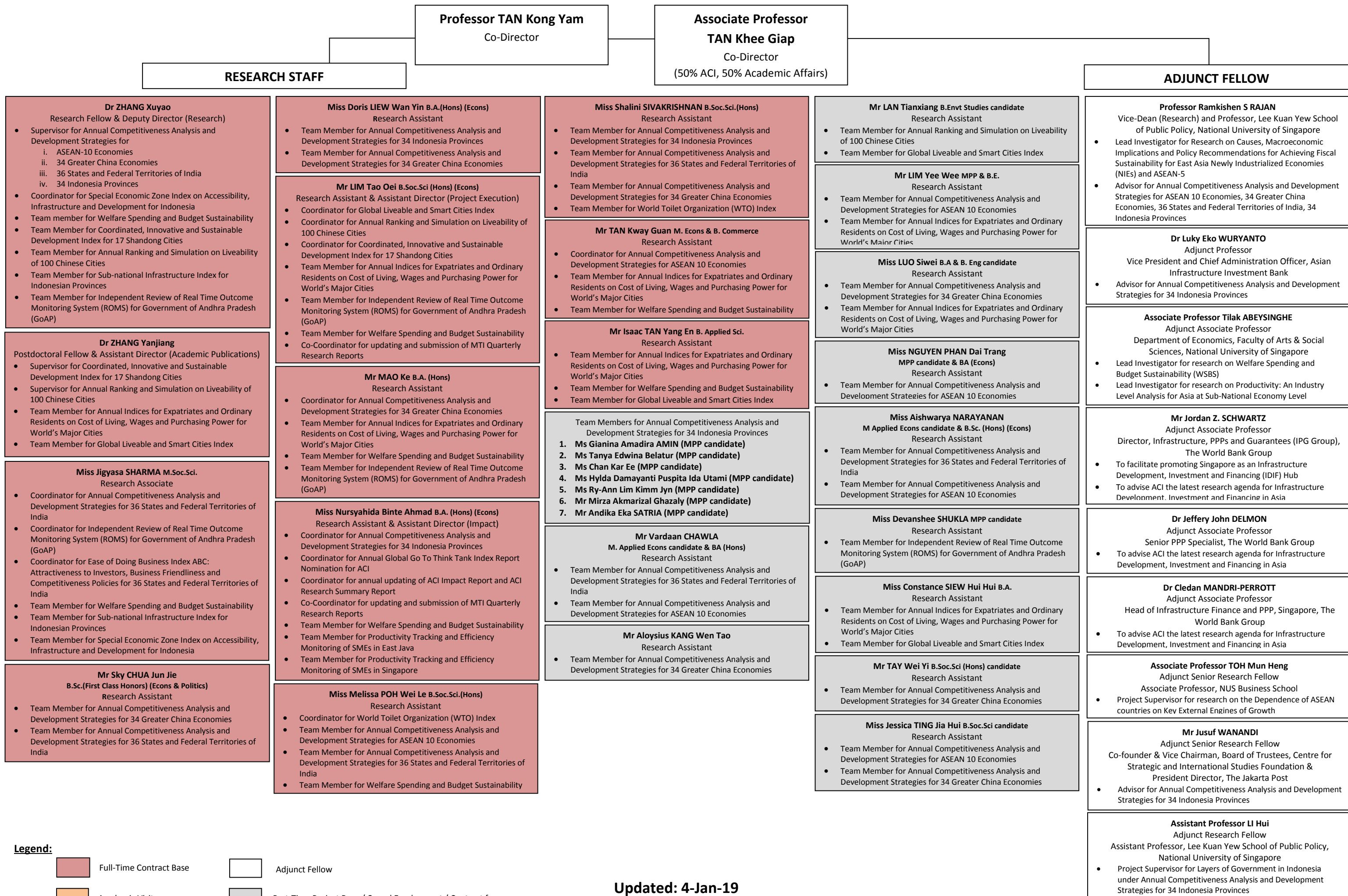


**CORPORATE STRUCTURE OF ASIA COMPETITIVENESS INSTITUTE (Research Staff, Adjunct Fellow) – as of 4 January 2019**



**Legend:**

- Full-Time Contract Base
- Academic Visitor
- Adjunct Fellow
- Part-Time Project Base / Casual Employment / Contract for Services

**Updated: 4-Jan-19**  
**Vetted By: Co-Director, ACI**