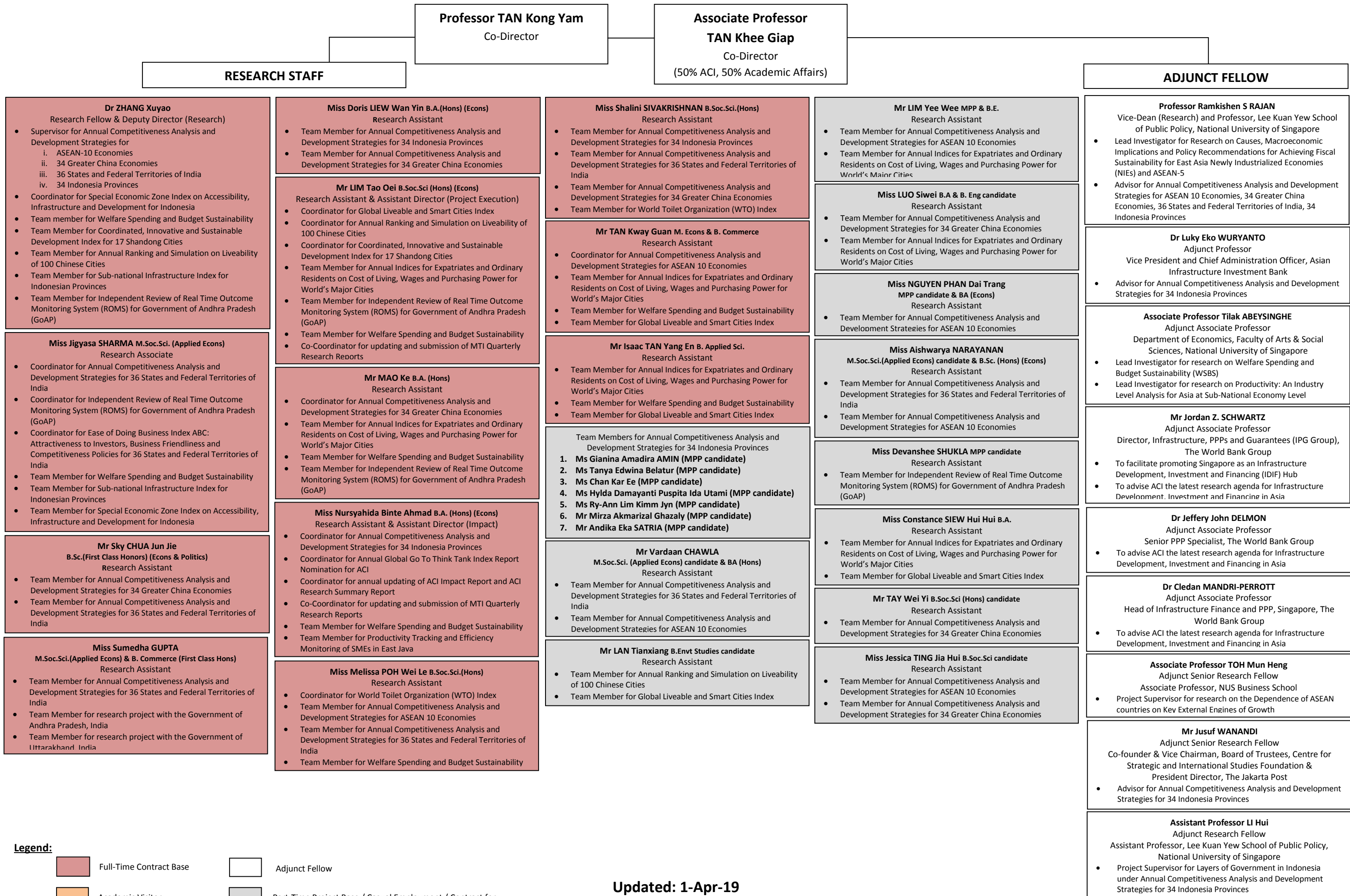


CORPORATE STRUCTURE OF ASIA COMPETITIVENESS INSTITUTE (Research Staff, Adjunct Fellow) – as of 1 April 2019



Legend:

- Full-Time Contract Base
- Adjunct Fellow
- Academic Visitor
- Part-Time Project Base / Casual Employment / Contract for Services

Updated: 1-Apr-19
Vetted By: Co-Director, ACI