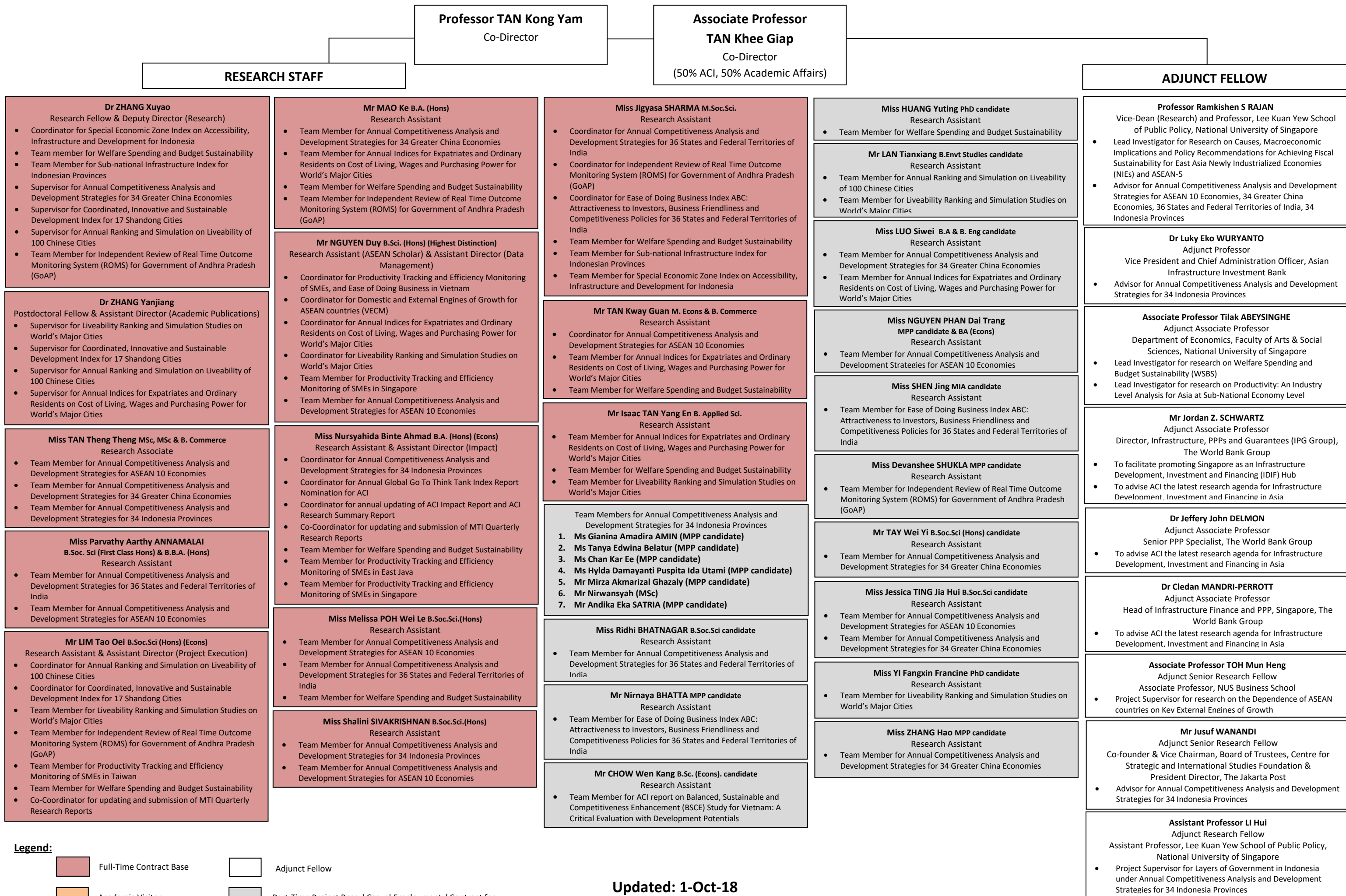


CORPORATE STRUCTURE OF ASIA COMPETITIVENESS INSTITUTE (Research Staff, Adjunct Fellow) – as of 1 October 2018



Dr ZHANG Xuyao
Research Fellow & Deputy Director (Research)

- Coordinator for Special Economic Zone Index on Accessibility, Infrastructure and Development for Indonesia
- Team member for Welfare Spending and Budget Sustainability
- Team Member for Sub-national Infrastructure Index for Indonesian Provinces
- Supervisor for Annual Competitiveness Analysis and Development Strategies for 34 Greater China Economies
- Supervisor for Coordinated, Innovative and Sustainable Development Index for 17 Shandong Cities
- Supervisor for Annual Ranking and Simulation on Liveability of 100 Chinese Cities
- Team Member for Independent Review of Real Time Outcome Monitoring System (ROMS) for Government of Andhra Pradesh (GoAP)

Mr MAO Ke B.A. (Hons)
Research Assistant

- Team Member for Annual Competitiveness Analysis and Development Strategies for 34 Greater China Economies
- Team Member for Annual Indices for Expatriates and Ordinary Residents on Cost of Living, Wages and Purchasing Power for World's Major Cities
- Team Member for Welfare Spending and Budget Sustainability
- Team Member for Independent Review of Real Time Outcome Monitoring System (ROMS) for Government of Andhra Pradesh (GoAP)

Miss Jigyasa SHARMA M.Soc.Sci.
Research Assistant

- Coordinator for Annual Competitiveness Analysis and Development Strategies for 36 States and Federal Territories of India
- Coordinator for Independent Review of Real Time Outcome Monitoring System (ROMS) for Government of Andhra Pradesh (GoAP)
- Coordinator for Ease of Doing Business Index ABC: Attractiveness to Investors, Business Friendliness and Competitiveness Policies for 36 States and Federal Territories of India
- Team Member for Welfare Spending and Budget Sustainability
- Team Member for Sub-national Infrastructure Index for Indonesian Provinces
- Team Member for Special Economic Zone Index on Accessibility, Infrastructure and Development for Indonesia

Miss HUANG Yuting PhD candidate
Research Assistant

- Team Member for Welfare Spending and Budget Sustainability

Mr LAN Tianxiang B.Envst Studies candidate
Research Assistant

- Team Member for Annual Ranking and Simulation on Liveability of 100 Chinese Cities
- Team Member for Liveability Ranking and Simulation Studies on World's Major Cities

Miss LUO Siwei B.A & B. Eng candidate
Research Assistant

- Team Member for Annual Competitiveness Analysis and Development Strategies for 34 Greater China Economies
- Team Member for Annual Indices for Expatriates and Ordinary Residents on Cost of Living, Wages and Purchasing Power for World's Major Cities

Professor Ramkishan S RAJAN
Vice-Dean (Research) and Professor, Lee Kuan Yew School of Public Policy, National University of Singapore

- Lead Investigator for Research on Causes, Macroeconomic Implications and Policy Recommendations for Achieving Fiscal Sustainability for East Asia Newly Industrialized Economies (NIEs) and ASEAN-5
- Advisor for Annual Competitiveness Analysis and Development Strategies for ASEAN 10 Economies, 34 Greater China Economies, 36 States and Federal Territories of India, 34 Indonesia Provinces

Dr Luky Eko WURYANTO
Adjunct Professor
Vice President and Chief Administration Officer, Asian Infrastructure Investment Bank

- Advisor for Annual Competitiveness Analysis and Development Strategies for 34 Indonesia Provinces

Dr ZHANG Yanjiang
Postdoctoral Fellow & Assistant Director (Academic Publications)

- Supervisor for Liveability Ranking and Simulation Studies on World's Major Cities
- Supervisor for Coordinated, Innovative and Sustainable Development Index for 17 Shandong Cities
- Supervisor for Annual Ranking and Simulation on Liveability of 100 Chinese Cities
- Supervisor for Annual Indices for Expatriates and Ordinary Residents on Cost of Living, Wages and Purchasing Power for World's Major Cities

Mr NGUYEN Duy B.Sci. (Hons) (Highest Distinction)
Research Assistant (ASEAN Scholar) & Assistant Director (Data Management)

- Coordinator for Productivity Tracking and Efficiency Monitoring of SMEs, and Ease of Doing Business in Vietnam
- Coordinator for Domestic and External Engines of Growth for ASEAN countries (VECM)
- Coordinator for Annual Indices for Expatriates and Ordinary Residents on Cost of Living, Wages and Purchasing Power for World's Major Cities
- Coordinator for Liveability Ranking and Simulation Studies on World's Major Cities
- Team Member for Productivity Tracking and Efficiency Monitoring of SMEs in Singapore
- Team Member for Annual Competitiveness Analysis and Development Strategies for ASEAN 10 Economies

Mr TAN Kway Guan M. Econ & B. Commerce
Research Assistant

- Coordinator for Annual Competitiveness Analysis and Development Strategies for ASEAN 10 Economies
- Team Member for Annual Indices for Expatriates and Ordinary Residents on Cost of Living, Wages and Purchasing Power for World's Major Cities
- Team Member for Welfare Spending and Budget Sustainability

Miss NGUYEN PHAN Dai Trang MPP candidate & BA (Econs)
Research Assistant

- Team Member for Annual Competitiveness Analysis and Development Strategies for ASEAN 10 Economies

Associate Professor Tilak ABEYSINGHE
Adjunct Associate Professor
Department of Economics, Faculty of Arts & Social Sciences, National University of Singapore

- Lead Investigator for research on Welfare Spending and Budget Sustainability (WSBS)
- Lead Investigator for research on Productivity: An Industry Level Analysis for Asia at Sub-National Economy Level

Miss TAN Theng Theng MSc, MSc & B. Commerce
Research Associate

- Team Member for Annual Competitiveness Analysis and Development Strategies for ASEAN 10 Economies
- Team Member for Annual Competitiveness Analysis and Development Strategies for 34 Greater China Economies
- Team Member for Annual Competitiveness Analysis and Development Strategies for 34 Indonesia Provinces

Miss Nursyahida Binte Ahmad B.A. (Hons) (Econs)
Research Assistant & Assistant Director (Impact)

- Coordinator for Annual Competitiveness Analysis and Development Strategies for 34 Indonesia Provinces
- Coordinator for Annual Global Go To Think Tank Index Report Nomination for ACI
- Coordinator for annual updating of ACI Impact Report and ACI Research Summary Report
- Co-Coordinator for updating and submission of MTI Quarterly Research Reports
- Team Member for Welfare Spending and Budget Sustainability
- Team Member for Productivity Tracking and Efficiency Monitoring of SMEs in East Java
- Team Member for Productivity Tracking and Efficiency Monitoring of SMEs in Singapore

Mr Isaac TAN Yang En B. Applied Sci.
Research Assistant

- Team Member for Annual Indices for Expatriates and Ordinary Residents on Cost of Living, Wages and Purchasing Power for World's Major Cities
- Team Member for Welfare Spending and Budget Sustainability
- Team Member for Liveability Ranking and Simulation Studies on World's Major Cities

Miss SHEN Jing MIA candidate
Research Assistant

- Team Member for Ease of Doing Business Index ABC: Attractiveness to Investors, Business Friendliness and Competitiveness Policies for 36 States and Federal Territories of India

Mr Jordan Z. SCHWARTZ
Adjunct Associate Professor
Director, Infrastructure, PPPs and Guarantees (IPG Group), The World Bank Group

- To facilitate promoting Singapore as an Infrastructure Development, Investment and Financing (IDIF) Hub
- To advise ACI the latest research agenda for Infrastructure Development, Investment and Financing in Asia

Miss Parvathy Aarthy ANNAMALAI B.Soc. Sci (First Class Hons) & B.B.A. (Hons)
Research Assistant

- Team Member for Annual Competitiveness Analysis and Development Strategies for 36 States and Federal Territories of India
- Team Member for Annual Competitiveness Analysis and Development Strategies for ASEAN 10 Economies

Miss Melissa POH Wei Le B.Soc.Sci.(Hons)
Research Assistant

- Team Member for Annual Competitiveness Analysis and Development Strategies for ASEAN 10 Economies
- Team Member for Annual Competitiveness Analysis and Development Strategies for 36 States and Federal Territories of India
- Team Member for Welfare Spending and Budget Sustainability

Team Members for Annual Competitiveness Analysis and Development Strategies for 34 Indonesia Provinces

- Ms Gianina Amadira AMIN (MPP candidate)
- Ms Tanya Edwina Belatur (MPP candidate)
- Ms Chan Kar Ee (MPP candidate)
- Ms Hylda Damayanti Puspita Ida Utami (MPP candidate)
- Mr Mirza Akmarizal Ghazaly (MPP candidate)
- Mr Nirwansyah (MSc)
- Mr Andika Eka SATRIA (MPP candidate)

Miss Devanshee SHUKLA MPP candidate
Research Assistant

- Team Member for Independent Review of Real Time Outcome Monitoring System (ROMS) for Government of Andhra Pradesh (GoAP)

Dr Jeffery John DELMON
Adjunct Associate Professor
Senior PPP Specialist, The World Bank Group

- To advise ACI the latest research agenda for Infrastructure Development, Investment and Financing in Asia

Mr LIM Tao Oei B.Soc.Sci (Hons) (Econs)
Research Assistant & Assistant Director (Project Execution)

- Coordinator for Annual Ranking and Simulation on Liveability of 100 Chinese Cities
- Coordinator for Coordinated, Innovative and Sustainable Development Index for 17 Shandong Cities
- Team Member for Liveability Ranking and Simulation Studies on World's Major Cities
- Team Member for Independent Review of Real Time Outcome Monitoring System (ROMS) for Government of Andhra Pradesh (GoAP)
- Team Member for Productivity Tracking and Efficiency Monitoring of SMEs in Taiwan
- Team Member for Welfare Spending and Budget Sustainability
- Co-Coordinator for updating and submission of MTI Quarterly Research Reports

Miss Shalini SIVAKRISHNAN B.Soc.Sci.(Hons)
Research Assistant

- Team Member for Annual Competitiveness Analysis and Development Strategies for 34 Indonesia Provinces
- Team Member for Annual Competitiveness Analysis and Development Strategies for ASEAN 10 Economies

Miss Ridhi BHATNAGAR B.Soc.Sci candidate
Research Assistant

- Team Member for Annual Competitiveness Analysis and Development Strategies for 36 States and Federal Territories of India

Mr TAY Wei Yi B.Soc.Sci (Hons) candidate
Research Assistant

- Team Member for Annual Competitiveness Analysis and Development Strategies for 34 Greater China Economies

Dr Clelian MANDRI-PERROTT
Adjunct Associate Professor
Head of Infrastructure Finance and PPP, Singapore, The World Bank Group

- To advise ACI the latest research agenda for Infrastructure Development, Investment and Financing in Asia

Assistant Professor LI Hui
Adjunct Research Fellow
Assistant Professor, Lee Kuan Yew School of Public Policy, National University of Singapore

- Project Supervisor for Layers of Government in Indonesia under Annual Competitiveness Analysis and Development Strategies for 34 Indonesia Provinces

Miss Shalini SIVAKRISHNAN B.Soc.Sci.(Hons)
Research Assistant

- Team Member for Annual Competitiveness Analysis and Development Strategies for 34 Indonesia Provinces
- Team Member for Annual Competitiveness Analysis and Development Strategies for ASEAN 10 Economies

Mr Nirnaya BHATTA MPP candidate
Research Assistant

- Team Member for Ease of Doing Business Index ABC: Attractiveness to Investors, Business Friendliness and Competitiveness Policies for 36 States and Federal Territories of India

Miss Jessica TING Jia Hui B.Soc.Sci candidate
Research Assistant

- Team Member for Annual Competitiveness Analysis and Development Strategies for ASEAN 10 Economies
- Team Member for Annual Competitiveness Analysis and Development Strategies for 34 Greater China Economies

Associate Professor TOH Mun Heng
Adjunct Senior Research Fellow
Associate Professor, NUS Business School

- Project Supervisor for research on the Dependence of ASEAN countries on Key External Engines of Growth

Mr Jusuf WANANDI
Adjunct Senior Research Fellow
Co-founder & Vice Chairman, Board of Trustees, Centre for Strategic and International Studies Foundation & President Director, The Jakarta Post

- Advisor for Annual Competitiveness Analysis and Development Strategies for 34 Indonesia Provinces

Miss Shalini SIVAKRISHNAN B.Soc.Sci.(Hons)
Research Assistant

- Team Member for Annual Competitiveness Analysis and Development Strategies for 34 Indonesia Provinces
- Team Member for Annual Competitiveness Analysis and Development Strategies for ASEAN 10 Economies

Mr CHOW Wen Kang B.Sc. (Econs). candidate
Research Assistant

- Team Member for ACI report on Balanced, Sustainable and Competitiveness Enhancement (BSCE) Study for Vietnam: A Critical Evaluation with Development Potentials

Miss YI Fangxin Francine PhD candidate
Research Assistant

- Team Member for Liveability Ranking and Simulation Studies on World's Major Cities

Mr Jusuf WANANDI
Adjunct Senior Research Fellow
Co-founder & Vice Chairman, Board of Trustees, Centre for Strategic and International Studies Foundation & President Director, The Jakarta Post

- Advisor for Annual Competitiveness Analysis and Development Strategies for 34 Indonesia Provinces

Assistant Professor LI Hui
Adjunct Research Fellow
Assistant Professor, Lee Kuan Yew School of Public Policy, National University of Singapore

- Project Supervisor for Layers of Government in Indonesia under Annual Competitiveness Analysis and Development Strategies for 34 Indonesia Provinces